

P5 Indoor 1/16 Scan SMD2121 1920x960mm Magnetic Front Service LED Display

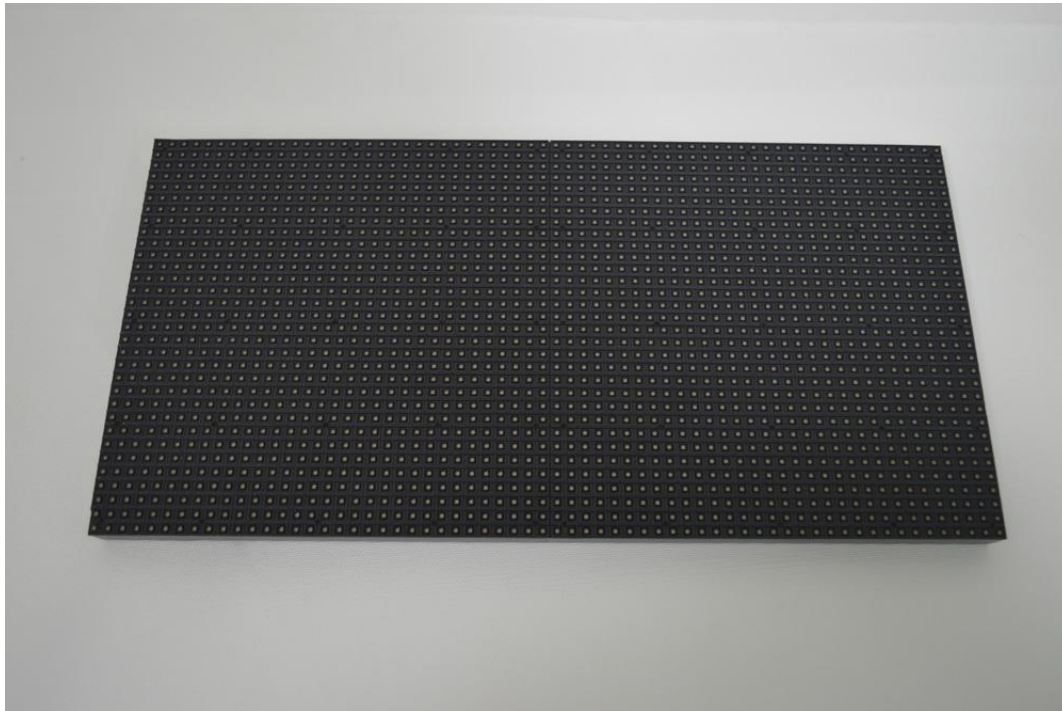
Model No.: **P5-I16S-SMD2121-64x32-L1920xH960**

LED Lamp Specification



Color	Package	Intensity	Viewing Angle	Wavelength	Testing Conditions
Red	SMD2121	70-100mcd	120°	620-625nm	25°C,20mA
Green		120-200mcd	120°	515-530nm	25°C,10mA
Blue		30-40mcd	120°	465-475nm	25°C,5mA

Module Photo





Module Parameter

Pixel Pitch	5mm
Pixel Configuration	SMD2121
Density	40,000 pixels/m ²
Module Resolution	64pixel(L) *32pixel(H)
Module Dimension	320mm(L) * 160mm(H) * 18mm(D)
Driving Mode	Constant current, 1/16 duty
Module Mask	Pure black mask---high contrast screen

LED Cabinet

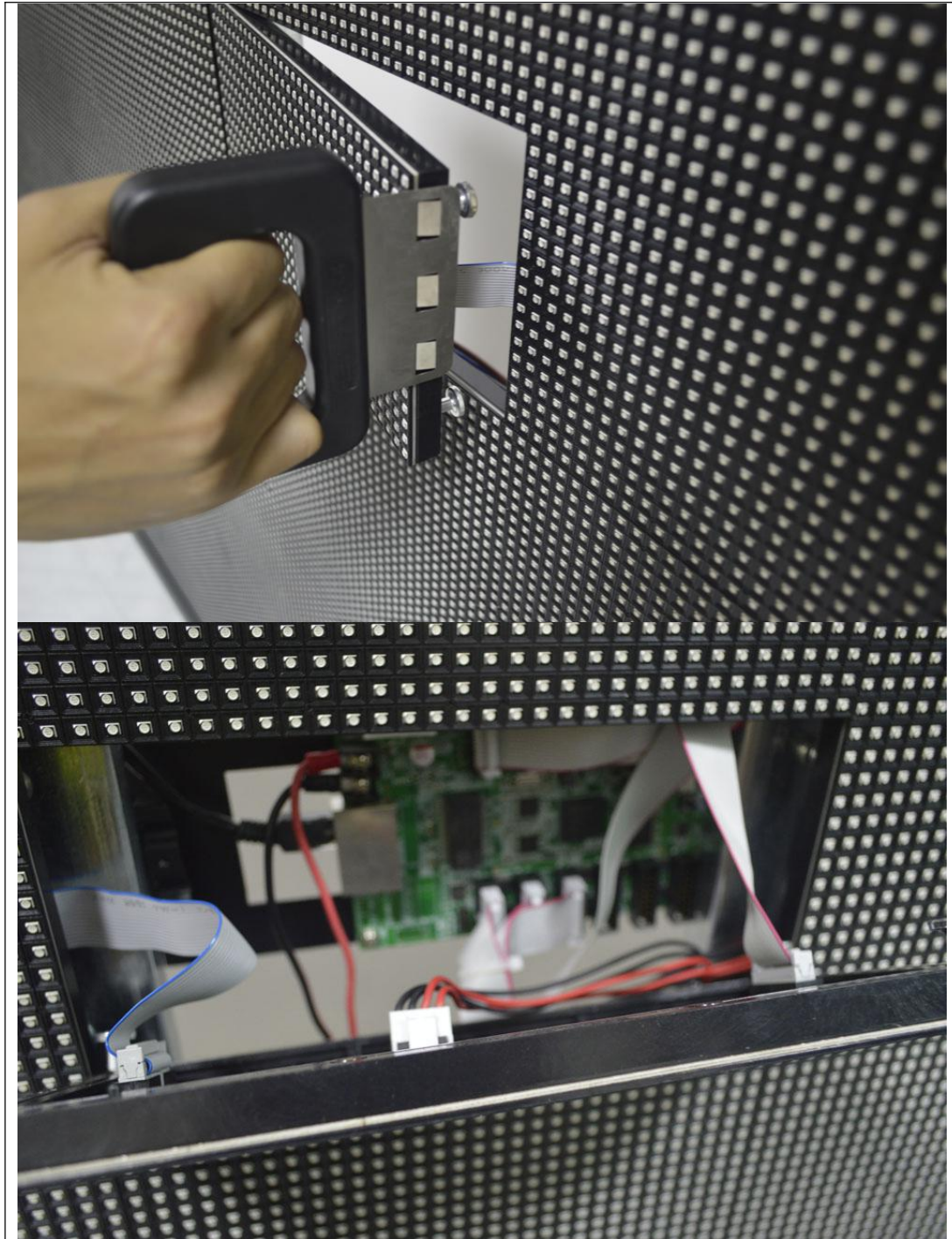
--	--

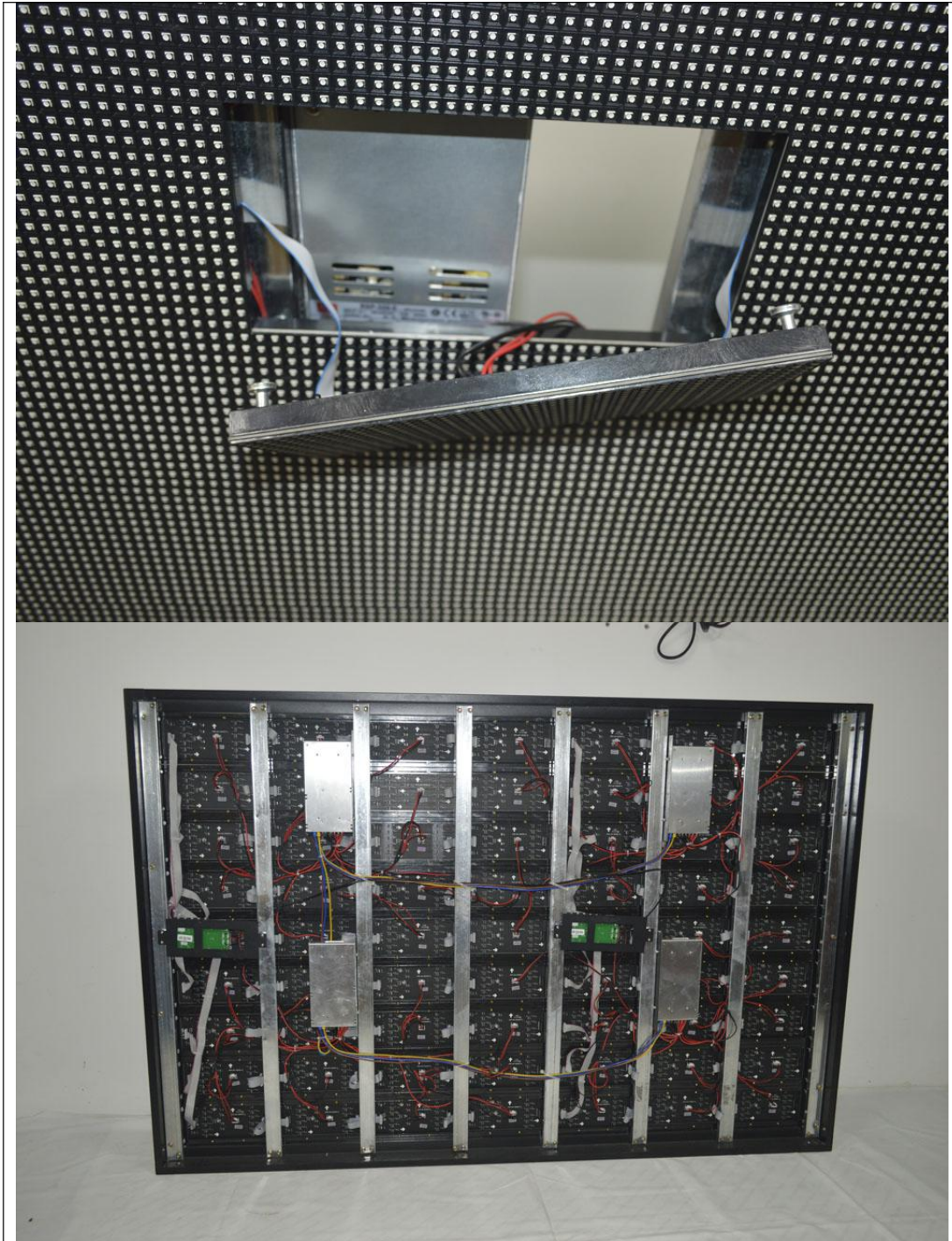


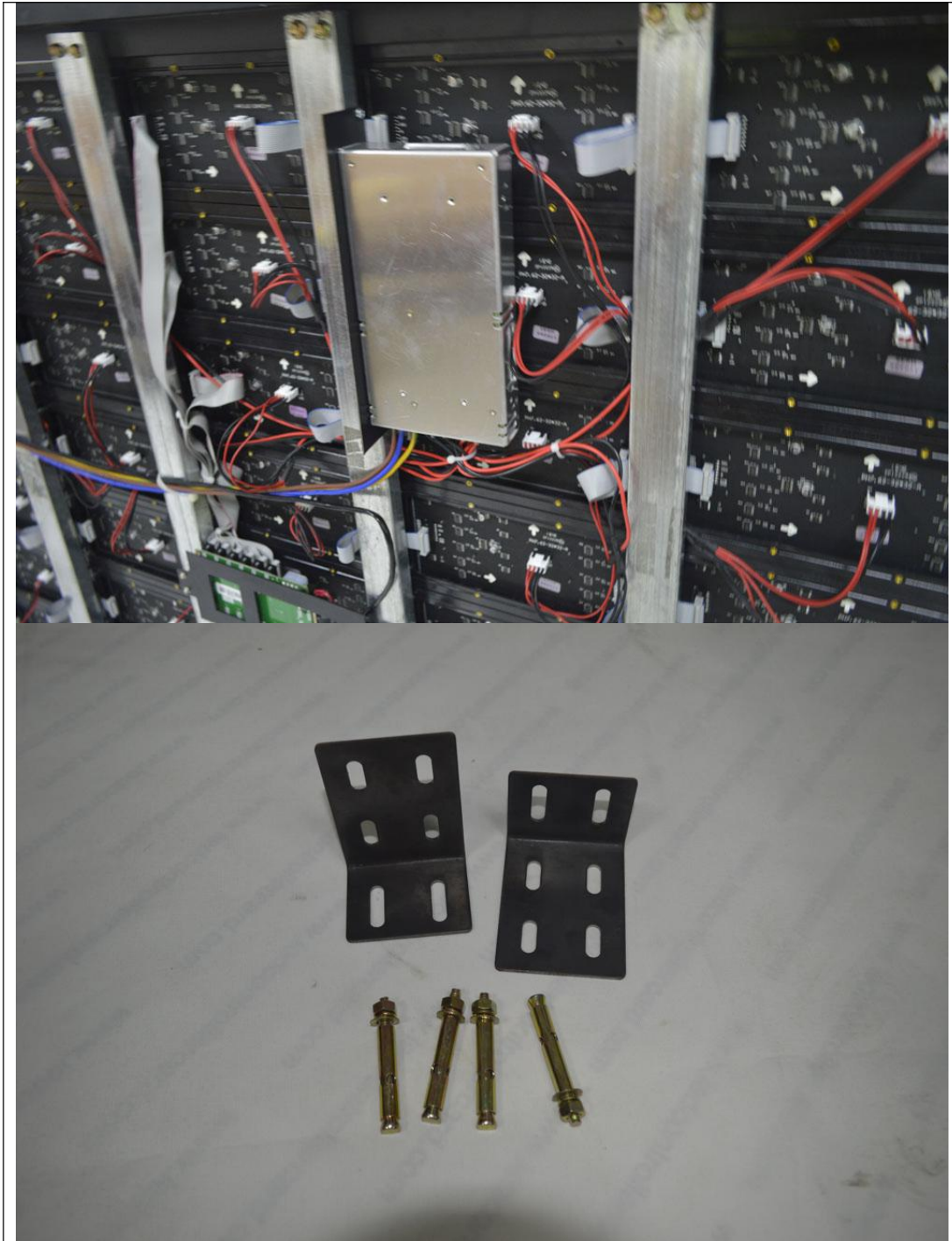
Module Quantity in a Cabinet	6(L) *6(H)
Display Size	1920 (L) *960 (H) mm
Border Size	45mm
Cabinet Dimension	2010 (L) *1050 (H) *90(D)mm
Cabinet Resolution	384 (L) * 192 (H)
Cabinet Material	Aluminum Frame
Cabinet Weight	≈37KG
Electricity Parameter	

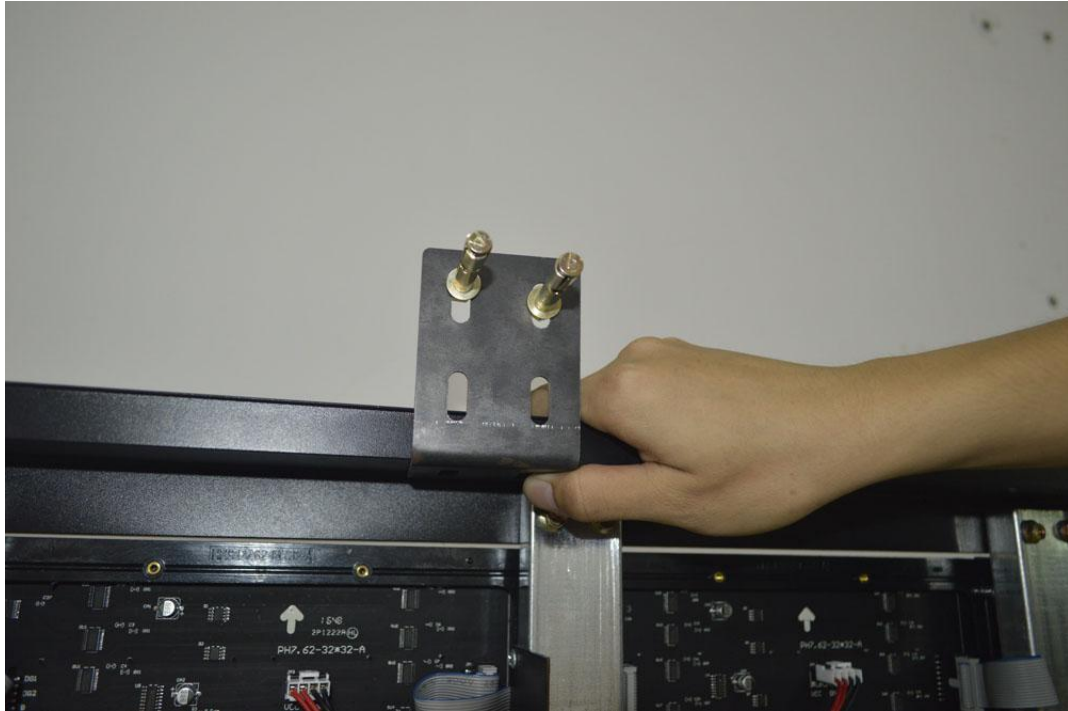
Optical Ratings	
Brightness	≥1000 cd/m ²
Viewing Angle	120°(Horizontal); 120°(Vertical)
Best Viewing Distance	≥5m
Gray Grade	14 bits
Display Color	4.4 trillion colors
Brightness Adjustment	100 grades by software or automatically by sensor
Operation Power	AC100-240V 50-60Hz Switchable
Max. Power Consumption	450 W/m ²
Avg. Power Consumption	150W/m ²
Control System	
Frame Frequency	≥60Hz
Refresh Frequency	≥960Hz
Input Signal	Composite Video, S-video, DVI, HDMI, SDI, HD-SDI
Control Distance	100m(Ethernet cable); 20KM(optical fiber cable)
Support VGA Mode	800*600, 1024*768, 1280*1024, 1600*1200
Color Temperature	5000—9300 adjustable
Brightness Correction	Pixel by pixel, module by module, cabinet by cabinet
Reliability	
Working Temperature	-20~+60 °C
Storage Temperature	-30~+70 °C
Working Humidity	10%~90% RH
Lifetime	100,000 hours
MTBF	5000 hours
Continuous Operating Time	≥72 hours
Protection Grade	IP31
Out-of-Control Pixel Rate	≤0.01%
Cabinet Details	











Package



