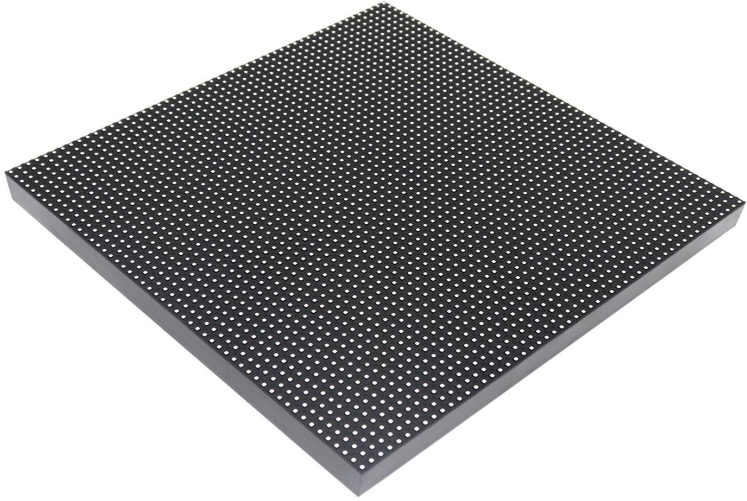
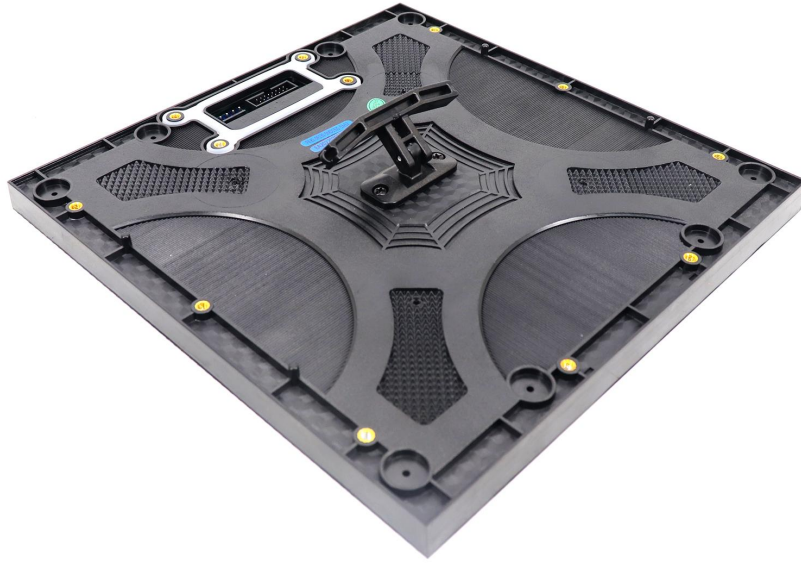


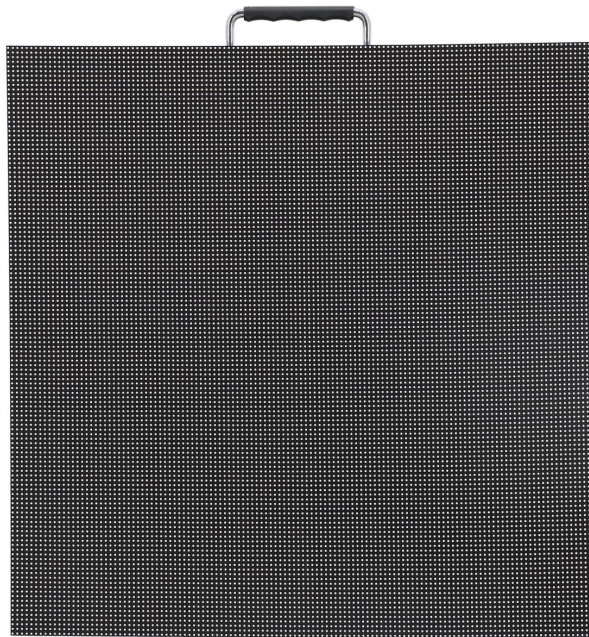
## P4.81 Outdoor 500x500mm Die-Cast Aluminum Rental LED Display

Model No.: **EA500C3-OP4.81**

<b>Module Parameter</b>	
Pixel Pitch	4.81mm
Pixel Configuration	SMD1921
Density	43,264 pixels/m <sup>2</sup>
Module Resolution	52pixel(L) *52pixel(H)
Module Dimension	250mm(L) * 250mm(H) * 18mm(D)
Driving Mode	Constant current, 1/13 duty
Module Mask	Pure black mask---high contrast screen
<b>Module Photo</b>	
	



**LED Cabinet**





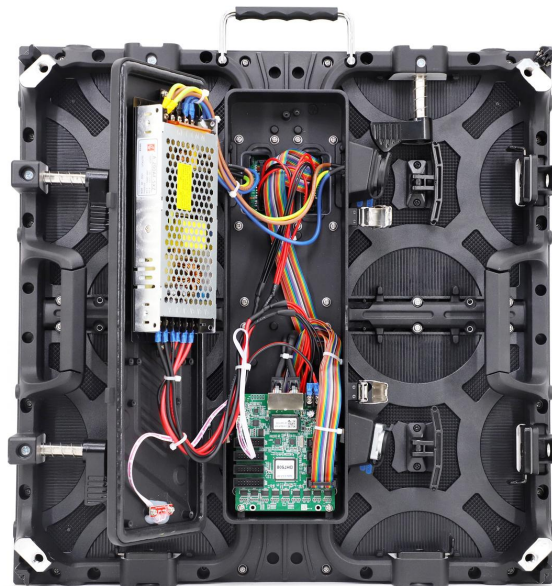
Module Quantity in a Cabinet	2(L) *2(H)
Cabinet Dimension	500(L)*500(H) * 85(D)mm
Cabinet Resolution	104(L) * 104(H)
Cabinet Material	Die-cast aluminum
Cabinet Weight	≈7.3KG
<b>Electricity Parameter</b>	
<b>Optical Ratings</b>	
Brightness	≥6,000 cd/m <sup>2</sup>
Viewing Angle	140°(Horizontal); 140°(Vertical)
Best Viewing Distance	≥5m
Gray Grade	14 bits
Display Color	4.4 trillion Colors
Brightness Adjustment	100 grades by software or automatically by sensor
Operation Power	AC100-240V 50-60Hz Switchable
Max. Power Consumption	600W/m <sup>2</sup>
Avg. Power Consumption	200W/m <sup>2</sup>
<b>Control System</b>	
Frame Frequency	≥60Hz
Screen Refresh Frequency	1920Hz / 3840Hz
Input Signal	Composite Video, S-video, DVI, HDMI, SDI, HD-SDI
Control Distance	100M (Ethernet cable); 20KM (Optical fiber cable)
Support VGA Mode	800*600, 1024*768, 1280*1024, 1600*1200
Color Temperature	5000—9300 adjustable

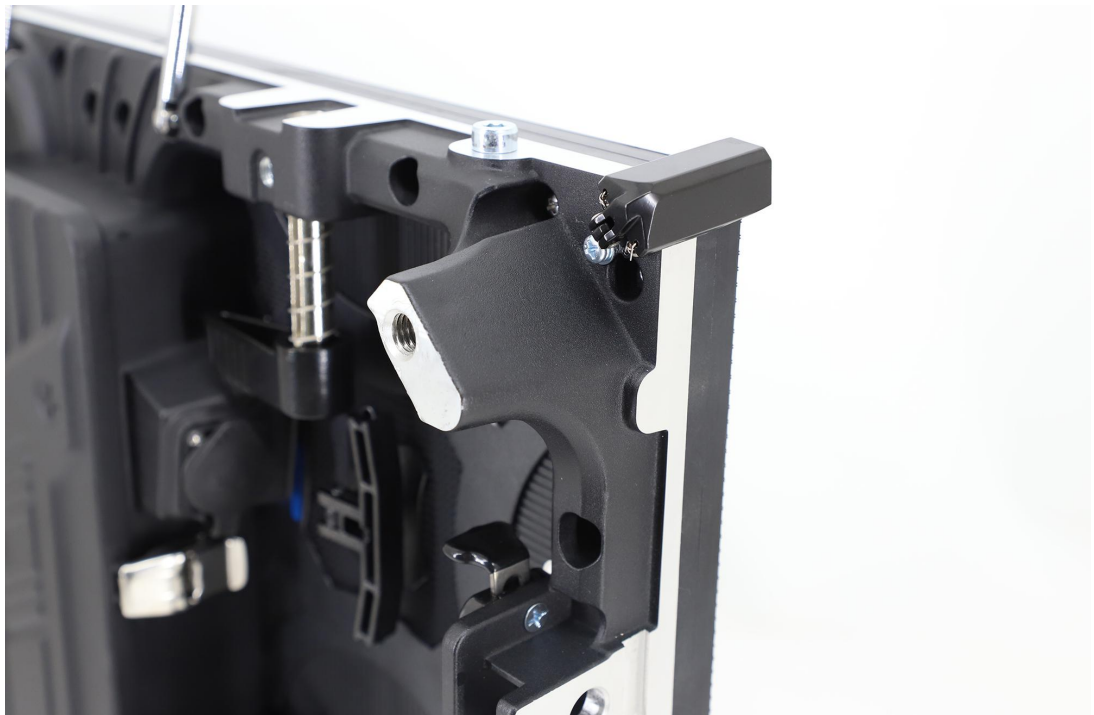
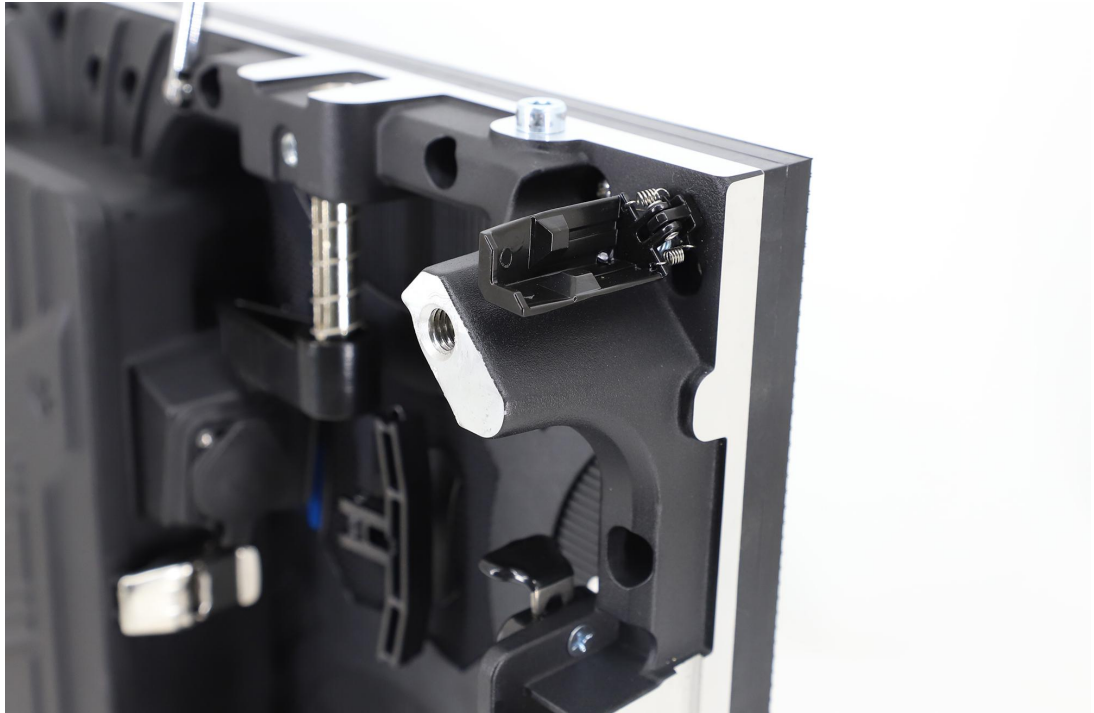
Brightness Correction	Pixel by pixel, module by module, cabinet by cabinet
<b>Reliability</b>	
Working Temperature	-20~+60 °C
Storage Temperature	-30~+70 °C
Working Humidity	10%~90% RH
Lifetime	100,000 hours
MTBF	5000 hours
Continuous Operating Time	≥72 hours
Protection Grade	IP65(front), IP54(rear)
Out-of-Control Pixel Rate	≤0.01%

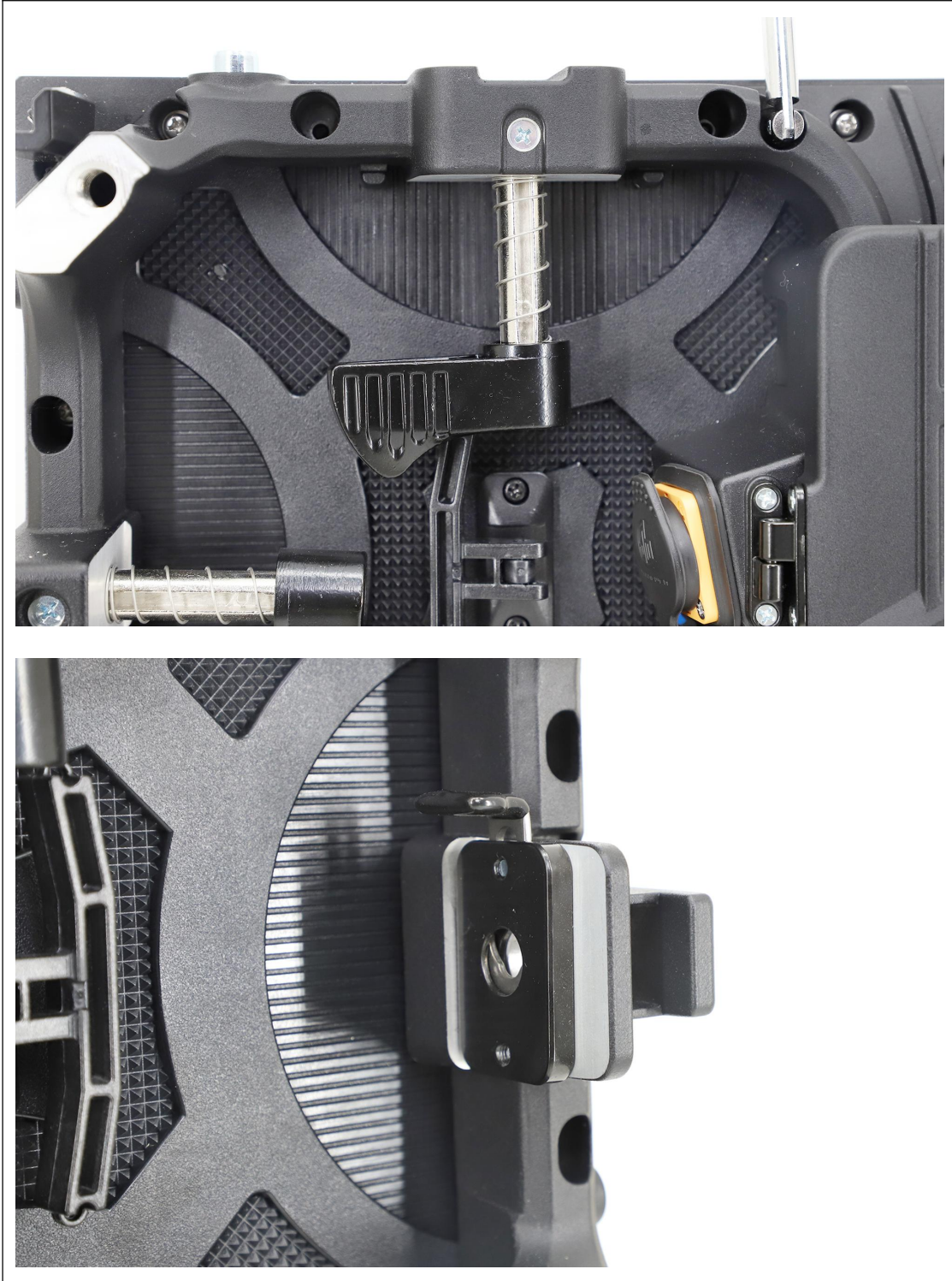
### Cabinet Details



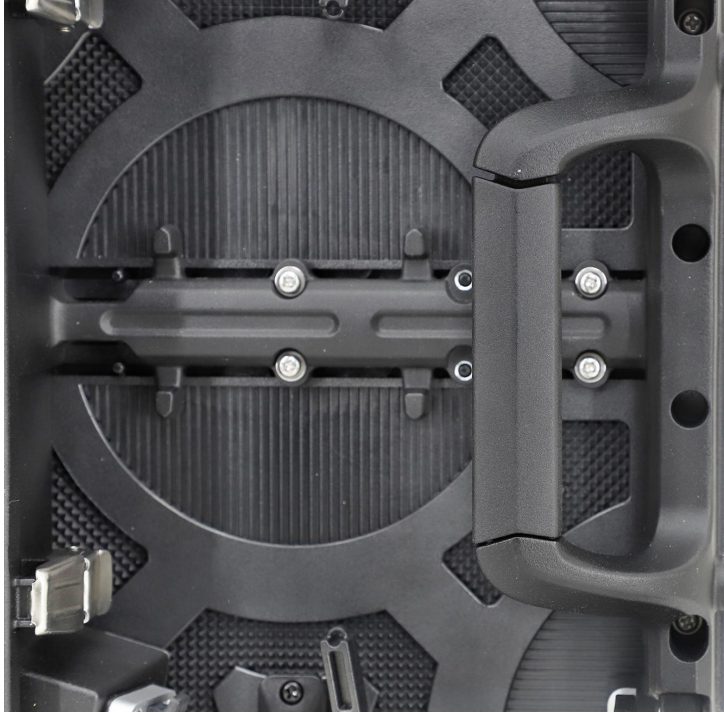














**Package**

