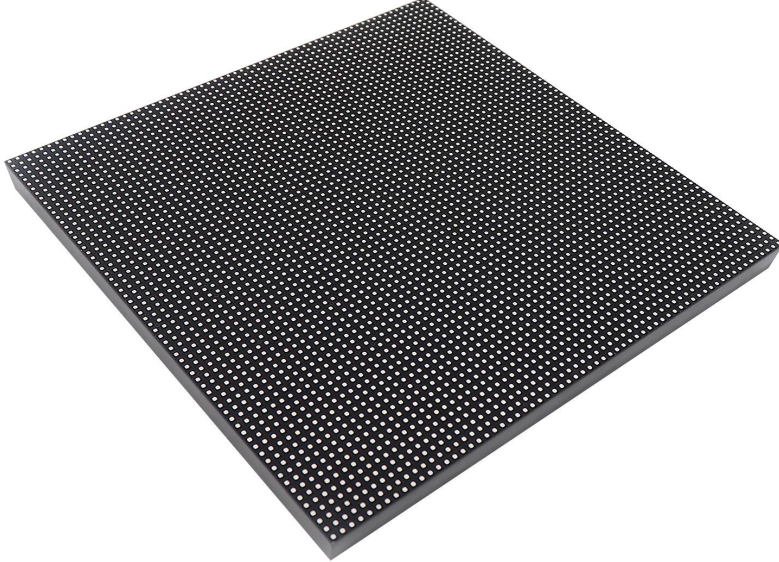
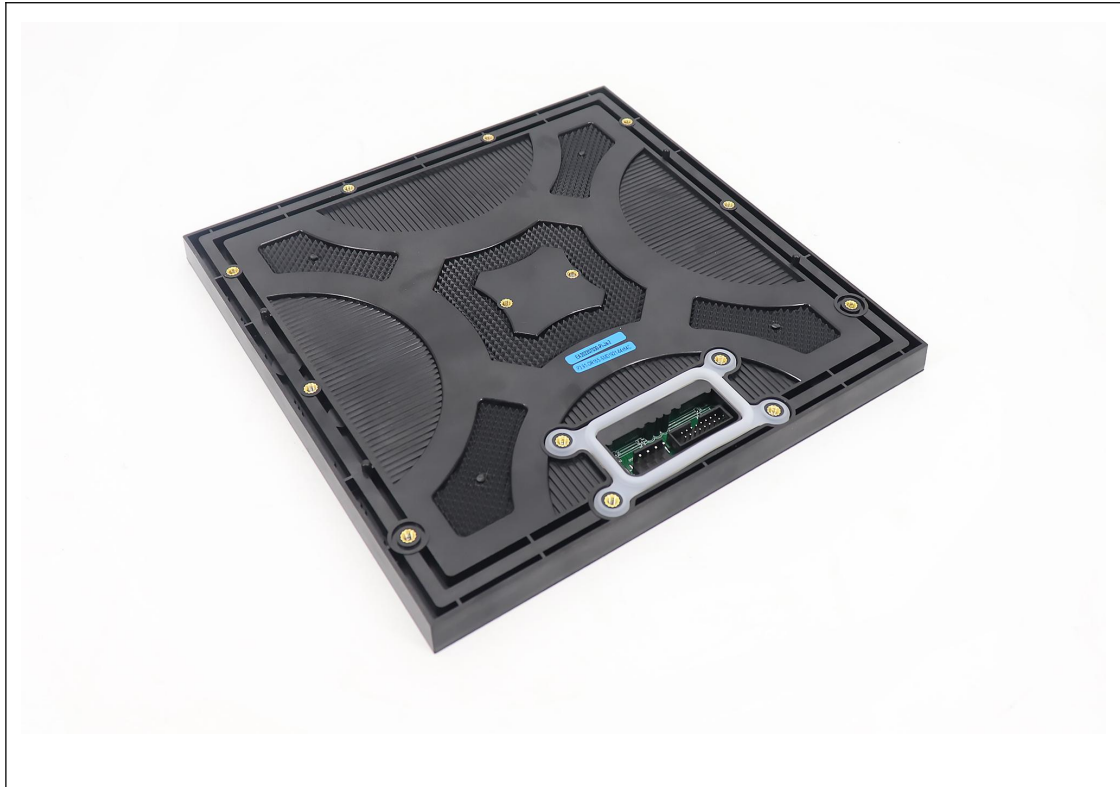


P3.91 Outdoor 500x1000C3 Rental LED Display

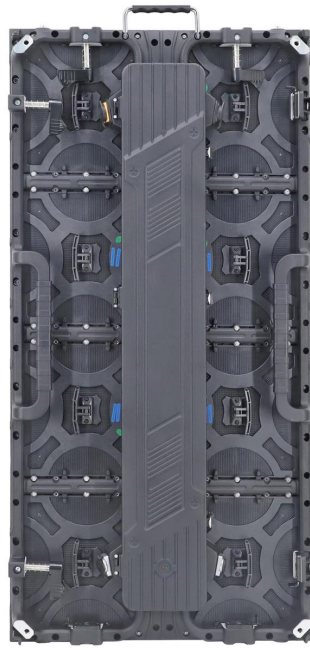
Model No.: **EA1000C3-OP3.91**

Module Parameter	
Pixel Pitch	3.91mm
Pixel Configuration	SMD1921
Density	65,536pixels/m ²
Module Resolution	64pixel(L) *64pixel(H)
Module Dimension	250mm(L) * 250mm(H) * 18mm(D)
Driving Mode	Constant current, 1/16 duty
Module Mask	Pure black mask---high contrast screen
Module Photo	
	



LED Cabinet





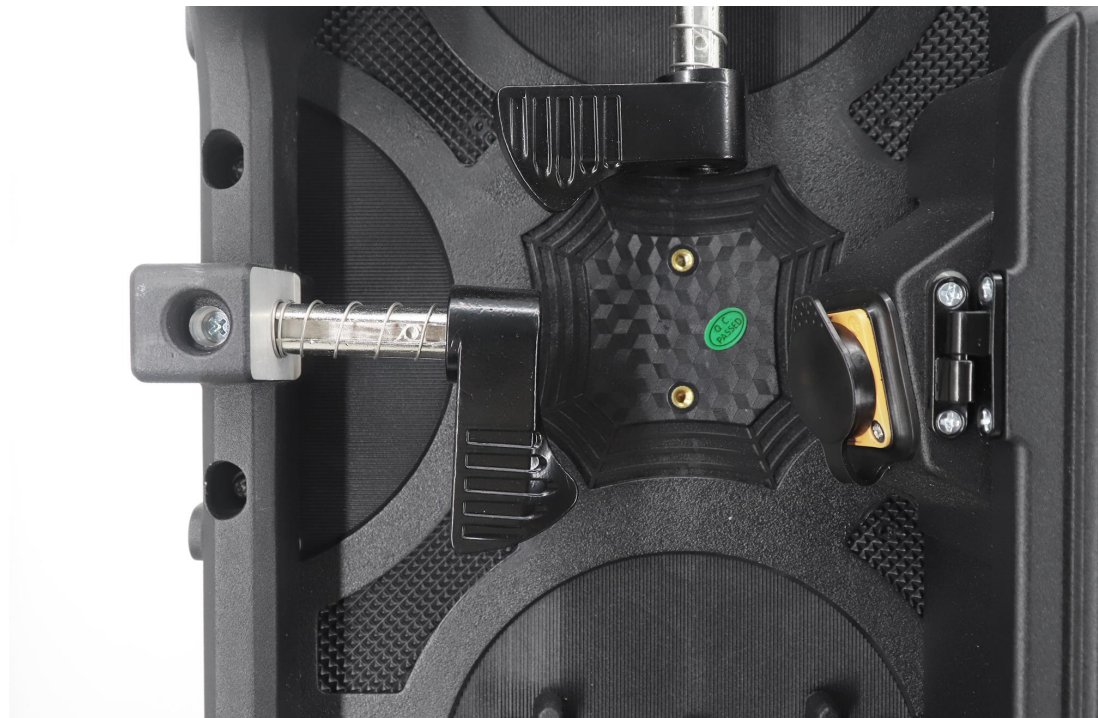
Module Quantity in a Cabinet	2(L) *4(H)
Cabinet Dimension	500(L)*1000(H)* 85(D)mm
Cabinet Resolution	128(L) * 256(H)
Cabinet Material	Die-cast aluminum
Cabinet Weight	≈12.6KG
Electricity Parameter	
Optical Ratings	
Brightness	≥6,000 cd/m ²
Viewing Angle	140°(Horizontal); 140°(Vertical)
Best Viewing Distance	≥4m
Gray Grade	14 bits
Display Color	4.4 trillion colors
Brightness Adjustment	100 grades by software or automatically by sensor
Operation Power	AC100-240V 50-60Hz Switchable
Max. Power Consumption	610 W/m ²
Avg. Power Consumption	204W/m ²
Control System	
Frame Frequency	≥60Hz
Screen Refresh Frequency	1920Hz / 3840Hz
Input Signal	Composite Video, S-video, DVI, HDMI, SDI, HD-SDI
Control Distance	100M (Ethernet cable); 20KM (Optical fiber cable)
Support VGA Mode	800*600, 1024*768, 1280*1024, 1600*1200
Color Temperature	5000—9300 adjustable

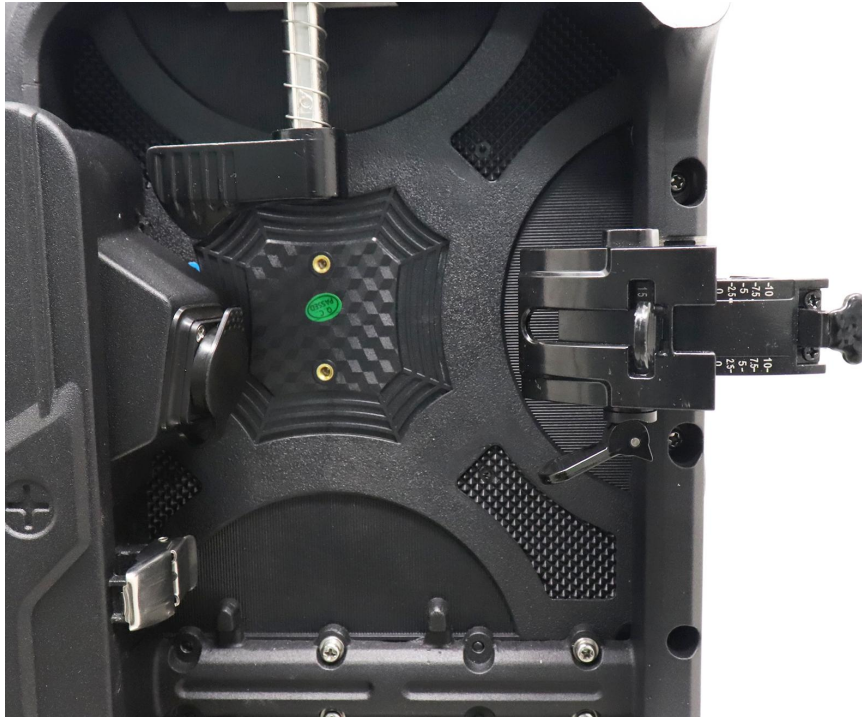
Brightness Correction	Pixel by pixel, module by module, cabinet by cabinet
Reliability	
Working Temperature	-20~+60 °C
Storage Temperature	-30~+70 °C
Working Humidity	10%~90% RH
Lifetime	100,000 hours
MTBF	5000 hours
Continuous Operating Time	≥72 hours
Protection Grade	IP65(front), IP54(rear)
Out-of-Control Pixel Rate	≤0.01%

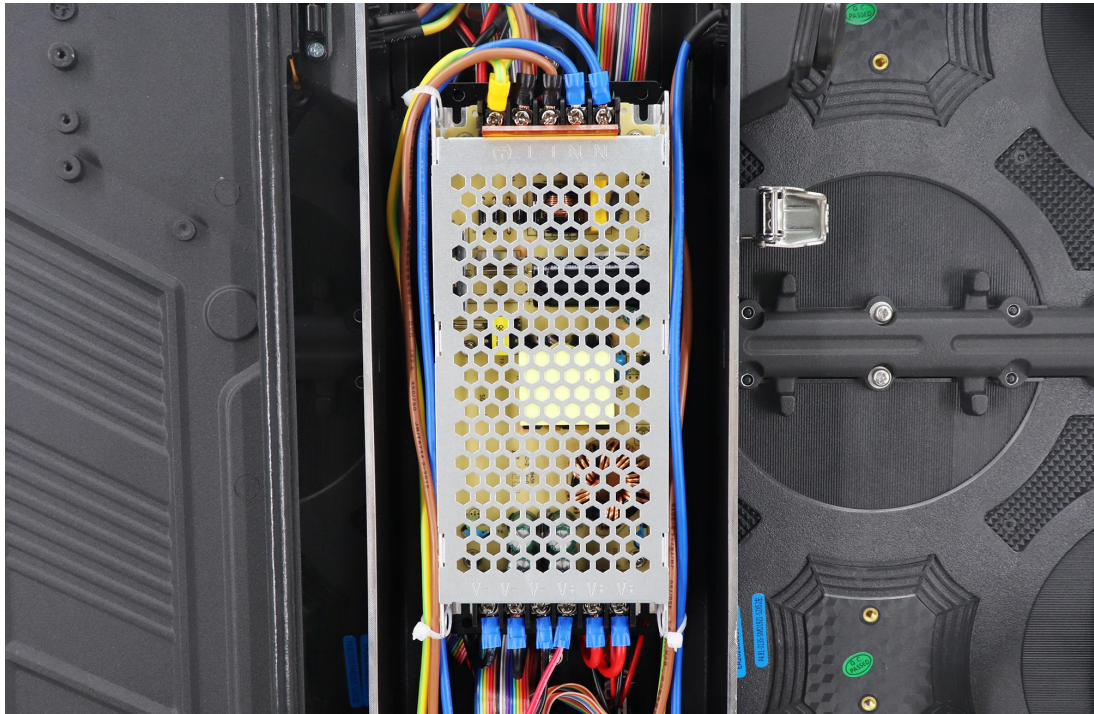
Cabinet Details











Package

