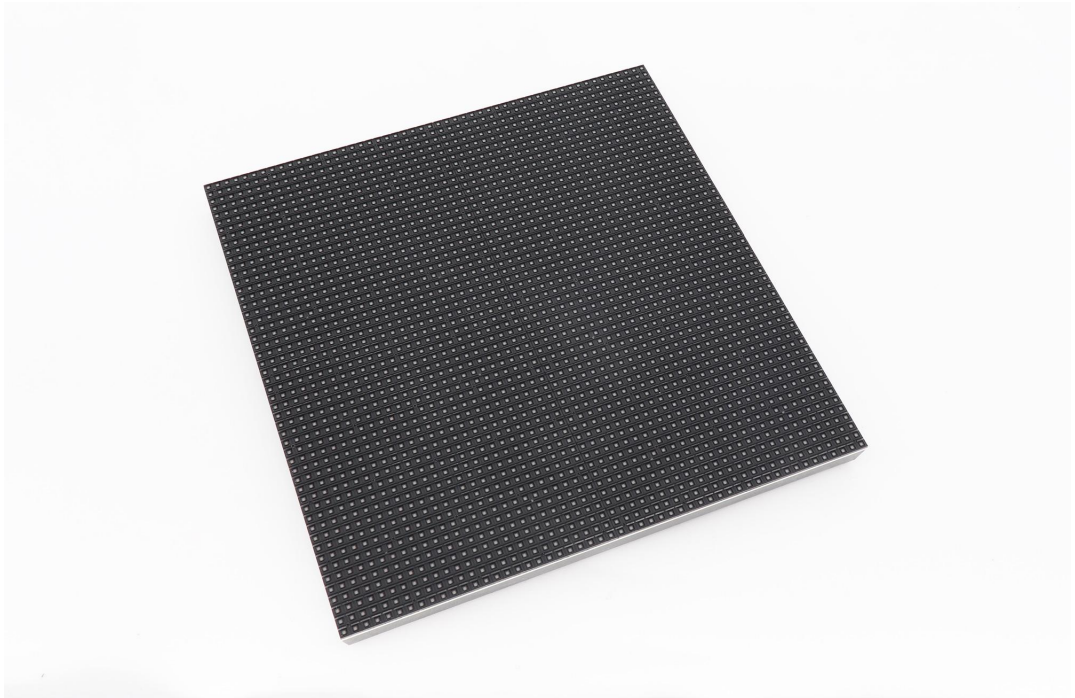
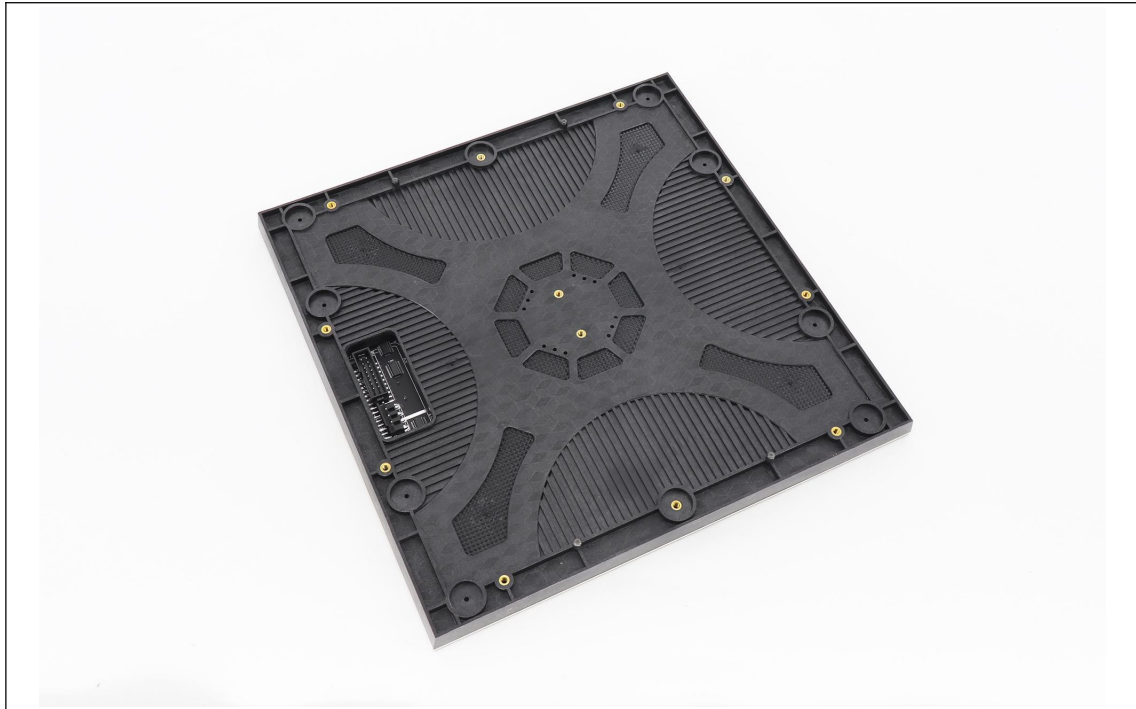


P3.91 Indoor 500x1000C3 Rental LED Display

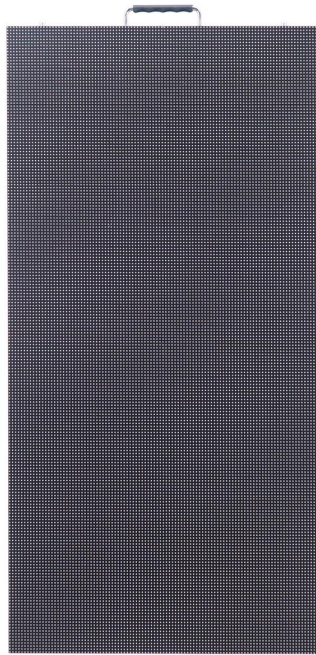
Model No.: **P3.91-IR16S-SMD2121-64x64-L500xH1000-C3**

| Module Parameter | |
|---|--|
| Pixel Pitch | 3.91mm |
| Pixel Configuration | SMD2121 |
| Density | 65,536pixels/m ² |
| Module Resolution | 64pixel(L) *64pixel(H) |
| Module Dimension | 250mm(L) * 250mm(H) * 18mm(D) |
| Driving Mode | Constant current, 1/16 duty |
| Module Mask | Pure black mask---high contrast screen |
| Module Photo | |
|  | |



LED Cabinet





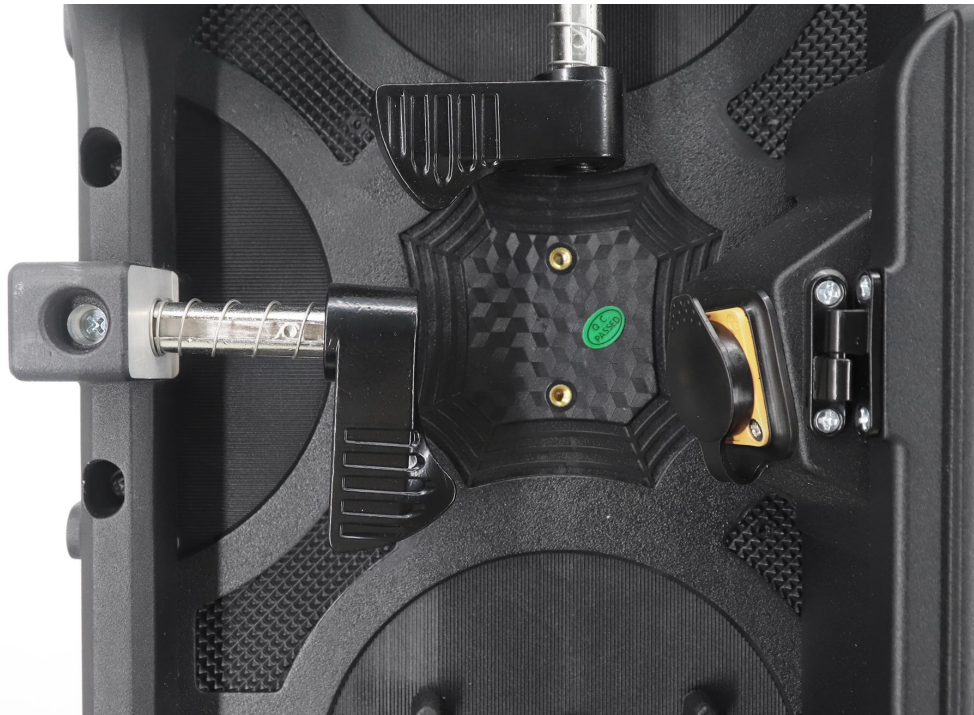
| | |
|------------------------------|--|
| Module Quantity in a Cabinet | 2(L) *4(H) |
| Cabinet Dimension | 500(L)*1000(H)* 85(D)mm |
| Cabinet Resolution | 128(L) * 256(H) |
| Cabinet Material | Die-cast aluminum |
| Cabinet Weight | ≈11KG |
| Electricity Parameter | |
| Optical Ratings | |
| Brightness | ≥1,200 cd/m ² |
| Viewing Angle | 140°(Horizontal); 140°(Vertical) |
| Best Viewing Distance | ≥4m |
| Gray Grade | 14 bits |
| Display Color | 4.4 trillion colors |
| Brightness Adjustment | 100 grades by software or automatically by sensor |
| Operation Power | AC100-240V 50-60Hz Switchable |
| Max. Power Consumption | 576 W/m ² |
| Avg. Power Consumption | 192W/m ² |
| Control System | |
| Frame Frequency | ≥60Hz |
| Screen Refresh Frequency | 1920Hz / 3840Hz |
| Input Signal | Composite Video, S-video, DVI, HDMI, SDI, HD-SDI |
| Control Distance | 100M (Ethernet cable); 20KM (Optical fiber cable) |
| Support VGA Mode | 800*600, 1024*768, 1280*1024, 1600*1200 |

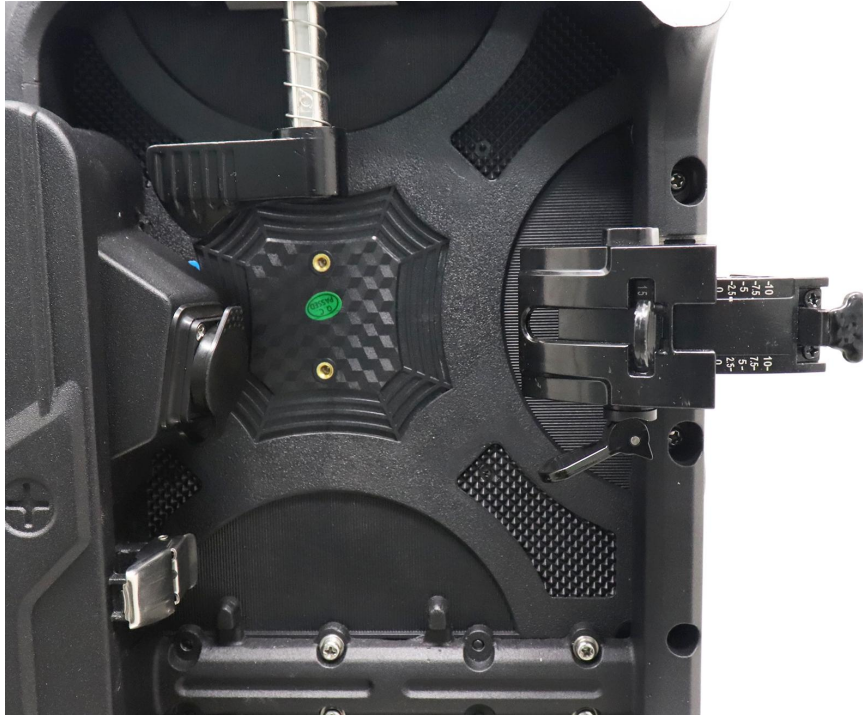
| | |
|---------------------------|--|
| Color Temperature | 5000—9300 adjustable |
| Brightness Correction | Pixel by pixel, module by module, cabinet by cabinet |
| Reliability | |
| Working Temperature | -20~+60 °C |
| Storage Temperature | -30~+70 °C |
| Working Humidity | 10%~90% RH |
| Lifetime | 100,000 hours |
| MTBF | 5000 hours |
| Continuous Operating Time | ≥72 hours |
| Protection Grade | IP31 |
| Out-of-Control Pixel Rate | ≤0.01% |

Cabinet Details











Package

