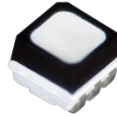


P10 Outdoor 1/4 Scan SMD3535 640x640mm Rental

LED Display

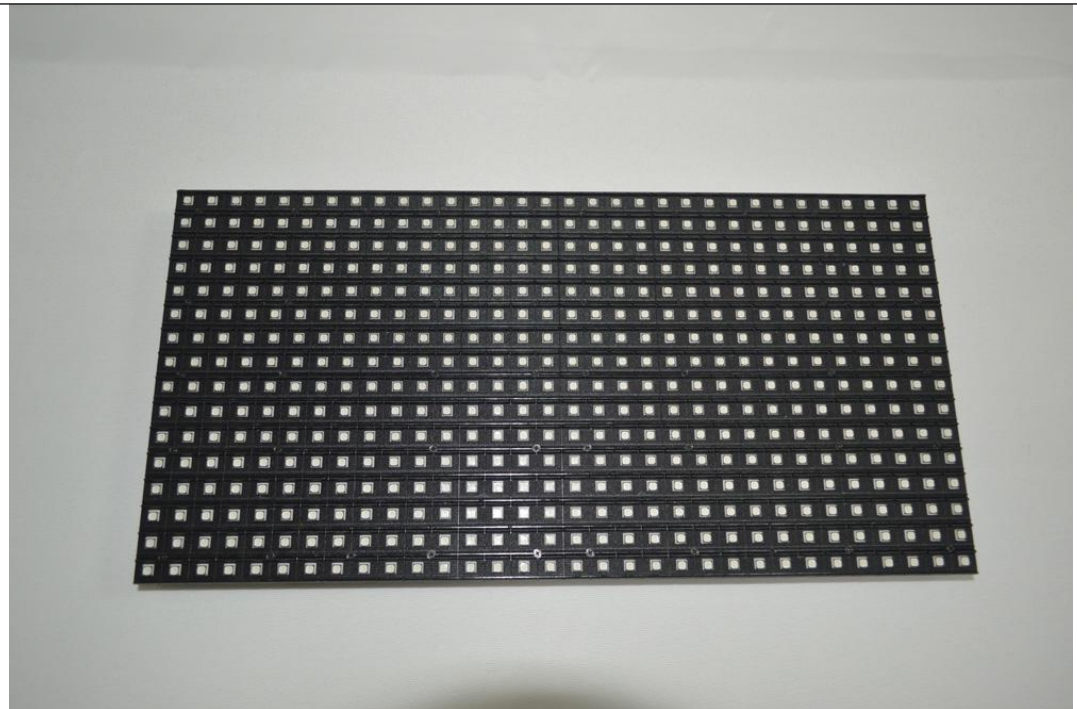
Model No.: **P10-OR4S-SMD3535-32x16-L640xH640**

LED Lamp Specification



Color	Package	Intensity	Viewing Angle	Wavelength	Testing Conditions
Red	SMD3535	800-1100mcd	120°	620-625nm	25°C,20mA
Green		1600-2250mcd	120°	515-530nm	25°C,20mA
Blue		350-500mcd	120°	465-475nm	25°C,20mA

Module Photo





Module Parameter

Pixel Pitch	10mm
Pixel Configuration	SMD3535
Density	10,000 pixels/m ²
Module Resolution	32pixel(L) * 16pixel(H)
Module Dimension	320mm(L) * 160mm(H) * 25mm(D)
Driving Mode	Constant current, 1/4 duty
Module Mask	Pure black mask---high contrast screen

LED Cabinet

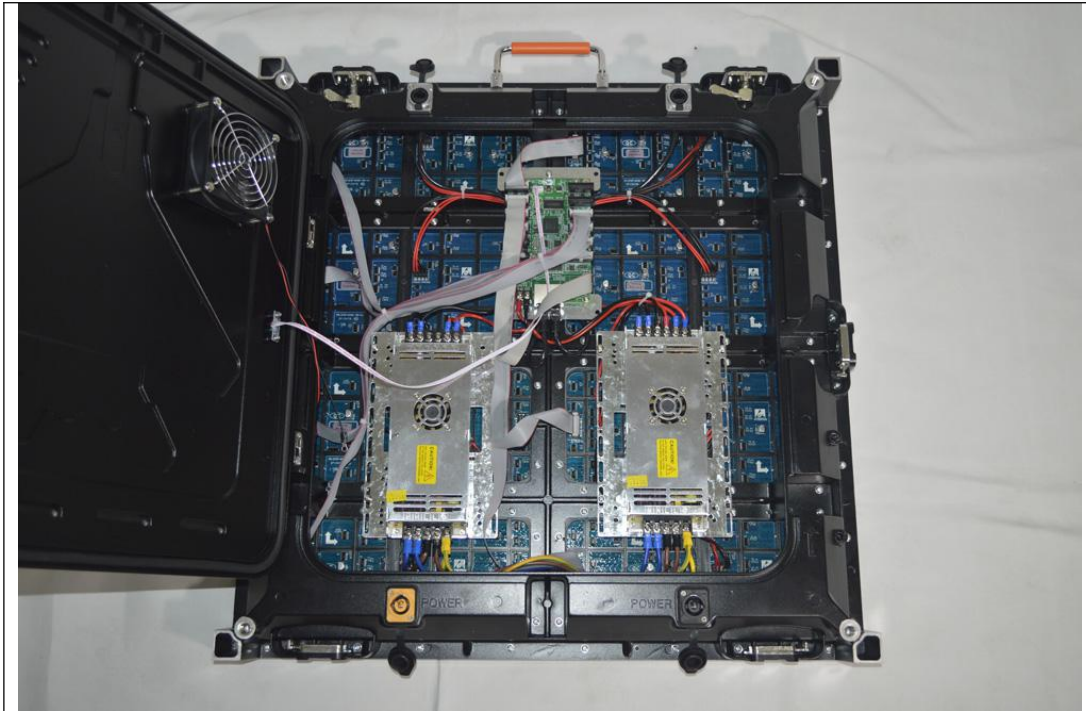


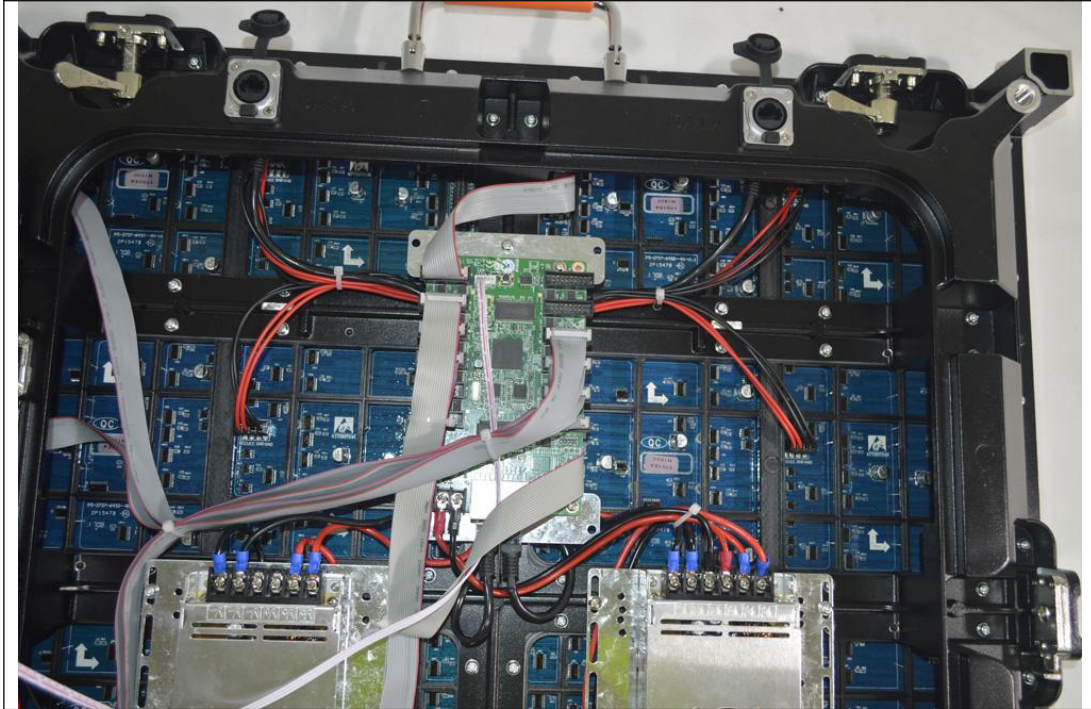
Module Quantity in a Cabinet	2(L) * 4(H)
Cabinet Dimension	640(L) * 640(H) * 80(D)mm
Cabinet Resolution	64(L) * 64(H)
Cabinet Material	Die-Cast Aluminum
Cabinet Weight	≈14.5KG
Electricity Parameter	
Optical Ratings	
Brightness	≥6,000 cd/m ²

Viewing Angle	120°(Horizontal); 120°(Vertical)
Best Viewing Distance	≥10m
Gray Grade	14 bits
Display Color	4.4 trillion Colors
Brightness Adjustment	100 grades by software or automatically by sensor
Operation Power	AC100-240V 50-60Hz Switchable
Max. Power Consumption	390 W/m ²
Avg. Power Consumption	130 W/m ²
Control System	
Frame Frequency	≥60Hz
Refresh Frequency	≥1,920Hz
Input Signal	Composite Video, S-video, DVI, HDMI, SDI, HD-SDI
Control Distance	100m(Ethernet cable); 20KM(optical fiber cable)
Support VGA Mode	800*600, 1024*768, 1280*1024, 1600*1200
Color Temperature	5000—9300 adjustable
Brightness Correction	Pixel by pixel, module by module, cabinet by cabinet
Reliability	
Working Temperature	-20~+60 °C
Storage Temperature	-30~+70 °C
Working Humidity	10%~90% RH
Lifetime	100,000 hours
MTBF	5000 hours
Continuous Operating Time	≥72 hours
Protection Grade	IP65(front), IP54(rear)
Out-of-Control Pixel Rate	≤0.01%
LED Cabinet	









Package



