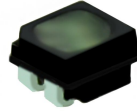


P1.904 Indoor 1/28 Scan 480x480mm Die-Cast

Aluminum HD LED Display

Model No.: **P1.904-HD28S-SMD1515-84x84-L480xH480**

LED Lamp Specification



Color	Package	Intensity	Viewing Angle	Wavelength	Testing Conditions
Red	SMD1515	45-65mcd	120°	620-625nm	25°C,10mA
Green		120-200mcd	120°	516-530nm	25°C,5mA
Blue		20-40mcd	120°	465-475nm	25°C,5mA

Module Parameter

Pixel Pitch	1.904mm
Pixel Configuration	SMD1515
Density	275,840 pixels/m ²
Module Resolution	84pixel(L) *84pixel(H)
Module Dimension	160mm(L) * 160mm(H) * 18mm(D)
Driving Mode	Constant current, 1/28 duty

LED Cabinet





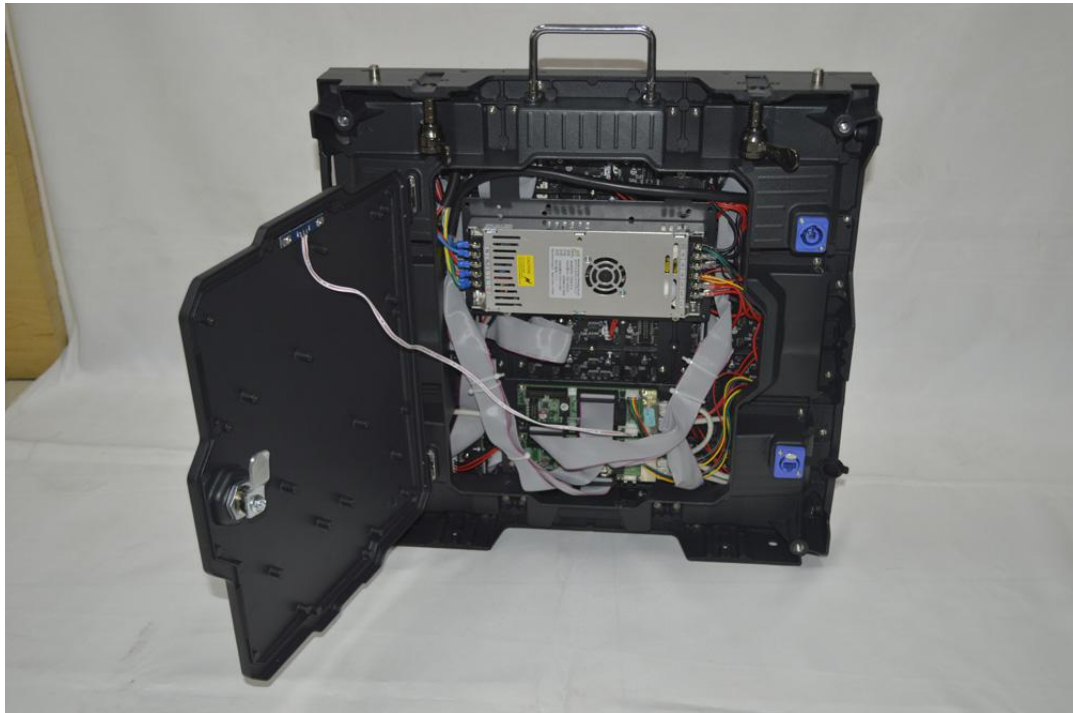
Module Quantity in a Cabinet	3(L) *3(H)
Cabinet Dimension	480(L)*480(H)* 80(D)mm
Cabinet Resolution	252(L) * 252(H)
Cabinet Material	Die-cast aluminum
Cabinet Weight	≈6KG
Electricity Parameter	
Optical Ratings	
Brightness	≥1,000 cd/m ²
Viewing Angle	120°(Horizontal); 120°(Vertical)
Best Viewing Distance	≥1m
Gray Grade	14 bits
Display Color	4.4 trillion color
Brightness Adjustment	100 grades by software or automatically by sensor
Operation Power	AC100-240V 50-60Hz Switchable
Max. Power Consumption	980 W/m ²
Avg. Power Consumption	330W/m ²
Control System	
Frame Frequency	≥60Hz
Refresh Frequency	≥1,920Hz
Input Signal	Composite Video, S-video, DVI, HDMI, SDI, HD-SDI
Control Distance	100m(Ethernet cable); 20KM(optical fiber cable)
Support VGA Mode	800*600, 1024*768, 1280*1024, 1600*1200
Color Temperature	5000—9300 adjustable
Brightness Correction	Pixel by pixel, module by module, cabinet by cabinet

Reliability	
Working Temperature	-20~+60 °C
Storage Temperature	-30~+70 °C
Working Humidity	10%~90% RH
Lifetime	100,000 hours
MTBF	5000 hours
Continuous Operating Time	≥72 hours
Protection Grade	IP31
Out-of-Control Pixel Rate	≤0.01%

Cabinet Details







Package

