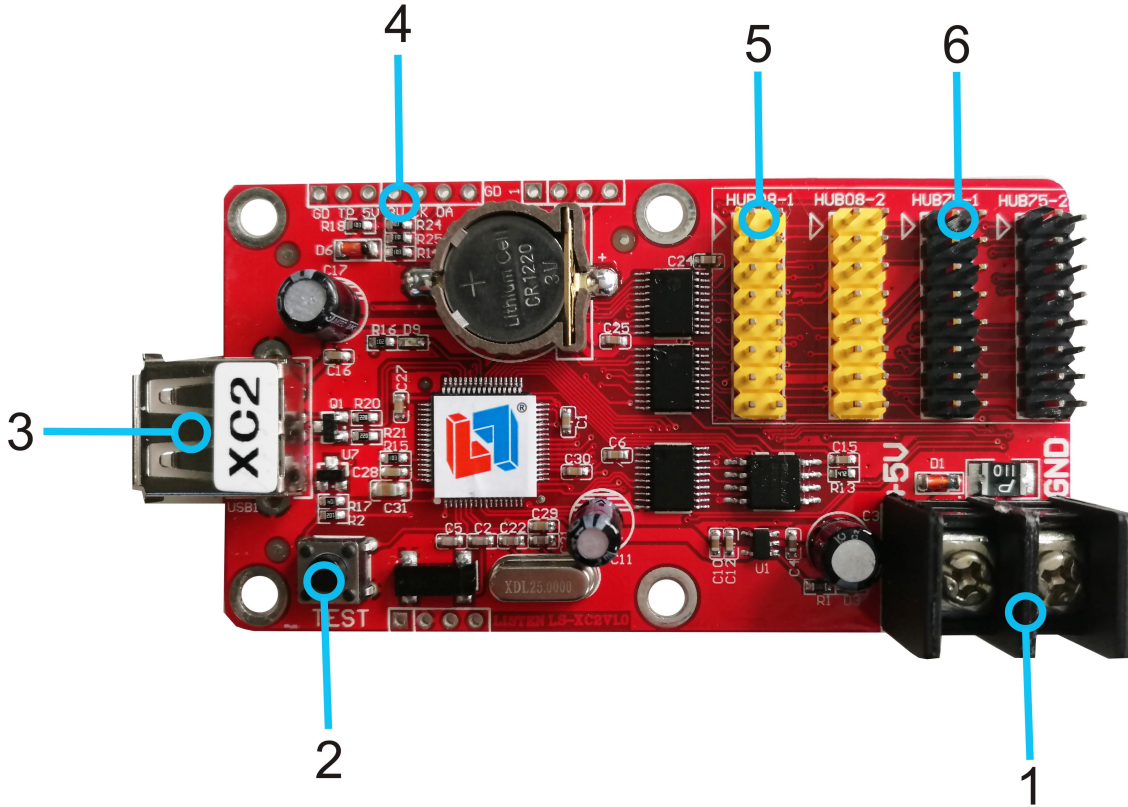


Specification for LS-XC2 LED Display Controller

Version	Date
V2.00	01/03/2016

Hardware



Item	Interface Name	Description
1	+5V Power Supply	Voltage range support 3.5V-6V
2	Multi-Function button	1.Test LED panel 2.Reset to defaults
3	USB Port	USB Port
4	Sensor port	Connect temperature sensor
5	HUB08 Port	Connect to modules with HUB08 port
6	HUB75 Port	Connect to modules with HUB75 port

Parameter

Memory	2MByte
Suitable for	Seven color and Full color led modules
Support Range	1280*16 ,640*32(4 scan), 320*64(16 scan)
Software function	Cluster management/Multi-program editing/Multi-area display/More language
Program number	128 programs, 16 area for each program
Area type	Image/Text/Animation/Time/Dial/Countdown/up/Temperature
Frame display	Program Water frame/Area Water frame
Clock display	Digital clock,Analog clock,Positive timing,Negative timing
Communication port	USB port
Display Port	2XHUB08,2XHUB75
Sensor	Temperature Sensor
Brightness Adjustment	16 grade, auto brightness adjustment/ adjust by software
Remote Switch	Support timing turn on/off , Turn on/off by software
Working Voltage	3.5V~6V
Max Power	<1W
Working Temperature	-40℃-85℃
Secondary Development	Provide complete DLL
Software	LED Player 6.0

Dimensional drawing

