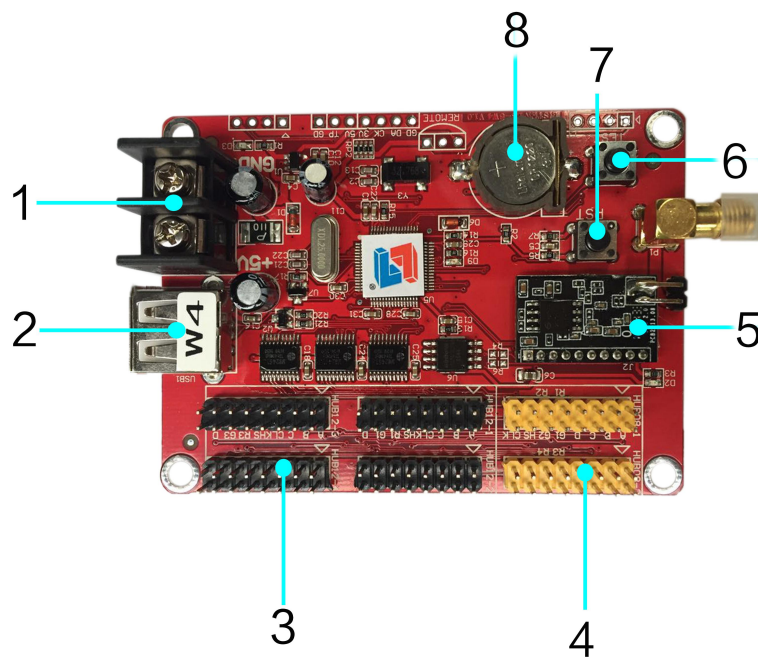


W4-WIFI SPECIFICATION

Hardware



Number	Interface	Description
1	5V power port	Wide voltage 3.5V-6V

2	USB interface	USB interface
3	HUB12 interface	Connect HUB12 interface
4	HUB08 interface	Connect HUB08 interface
5	WIFI	WIFI communication
6	Test button	Test display
7	Reset button	Reset factory data
8	RTC button battery	RTC supplying battery, voltage 3V

parameters

Model	W4-WIFI
On-load	single : 2048*16 2048*32 1344*48 1024*64 dual : 2048*16 1024*32 672*48 512*64
Memory	2MByte
Application	All single-dual LED display
Software	Cluster management/multi-display/multi-language
Programs	Support 128 programs, each has 16 area
Type	Image&text/subtitle/animation/time/analog/count up&down/temperature
Frame	Water frame all or in part
Clock	Digit clock/analog clock/count up & down
Communication interface	Wifi , USB
Display interface	2*HUB08, 4*HUB12
Sensor	Temperature sensor
Brightness	16 level, automatically adjust by timing or software
Remote switch	Power on & off by timing or software
Voltage	5V
Max power	< 1W
Temperature	-40°C -85°C
Secondary development	Complete DLL
Auxiliary software	LED Player 6.0 , LED APP

Dimensional Drawing

