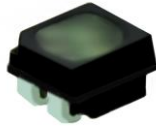


P3.076 Outdoor SMD1415 320x160mm Module

Specification

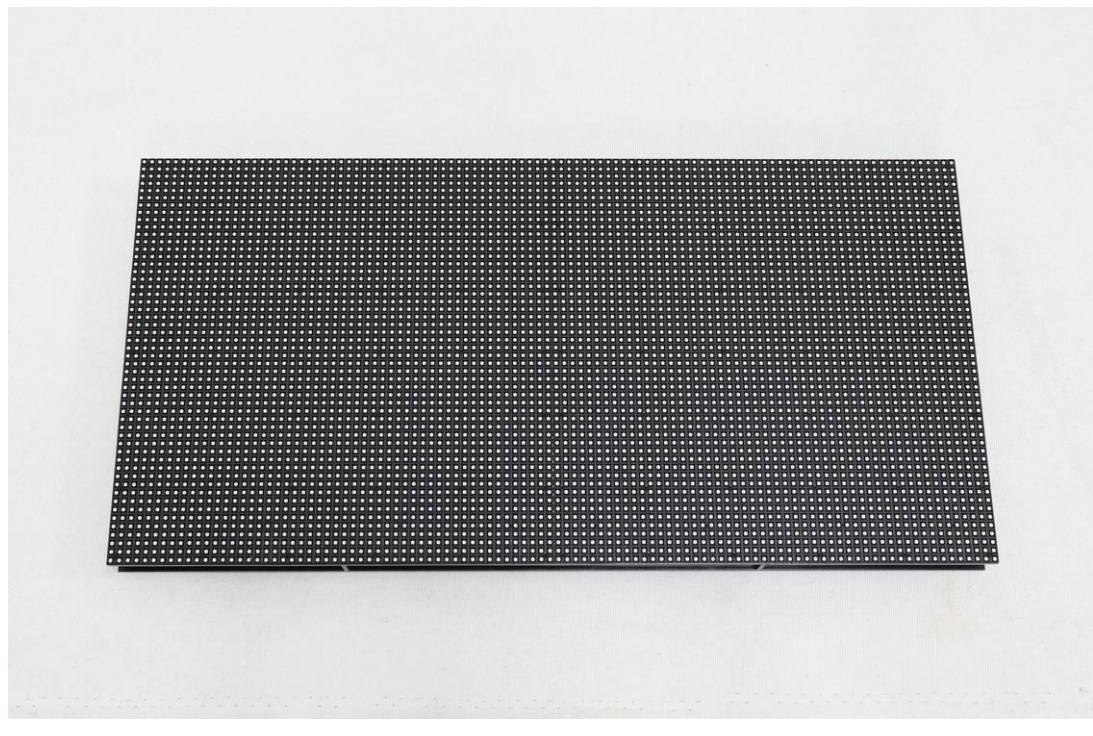
Model No.: **P3.076-O13S-SMD1415-104x52-E**

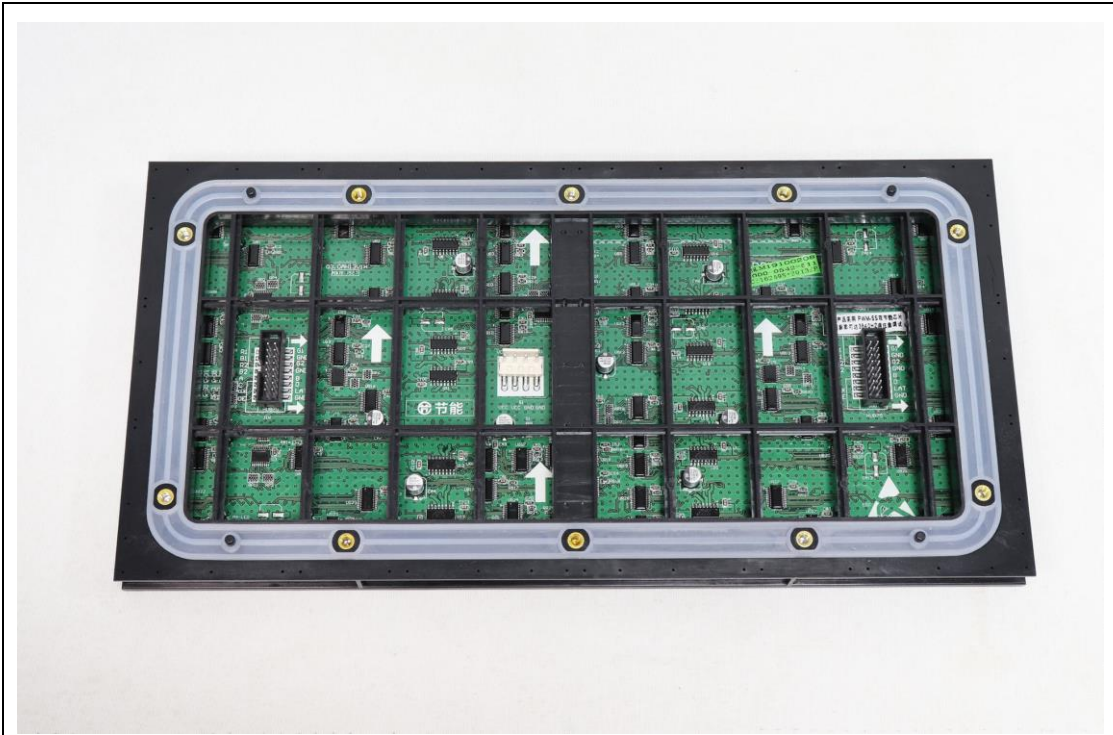
LED Lamp Specification



Color	Package	Intensity	Viewing Angle	Wavelength	Testing Conditions
Red	SMD1415	250-550mcd	120°/120°	620-625nm	25°C,15mA
Green		400-800mcd	120°/120°	510-535nm	25°C,8mA
Blue		50-120mcd	120°/120°	458-475nm	25°C,5mA

Module Photo





Module Parameter

Pixel Pitch	3.076mm
Pixel Configuration	SMD1415
Density	105,688 pixels/m ²
Module Resolution	104pixel(L) * 52pixel(H)
Module Dimension	320mm(L) * 160mm(H) * 25mm(D)
Driving Mode	Constant current, 1/13 duty

Electricity Parameter

Optical Ratings

Brightness	≥5,000 cd/m ²
Viewing Angle	120 °(Horizontal); 120 °(Vertical)
Best Viewing Distance	≥3m
Gray Grade	14 bits
Display Color	4.4 trillion colors
Brightness Adjustment	100 grades by software or automatically by sensor
Max. Power Consumption	40W

Control System

Frame Frequency	≥60Hz
Refresh Frequency	≥1920Hz
Input Signal	Composite Video, S-video, DVI, HDMI, SDI, HD-SDI
Control Distance	100m(Ethernet cable); 20KM(optical fiber cable)
Support VGA Mode	800*600, 1024*768, 1280*1024, 1600*1200
Color Temperature	5000—9300 adjustable

Brightness Correction	Pixel by pixel, module by module, cabinet by cabinet
Reliability	
Working Temperature	-20~+60 ℃
Storage Temperature	-30~+70 ℃
Working Humidity	10%~90% RH
Lifetime	100,000 hours
MTBF	5000 hours
Continuous Operating Time	≥72 hours
Protection Grade	IP65
Out-of-Control Pixel Rate	≤0.01%

Package

