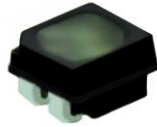


P3.076 SMD1415 Outdoor 640x1920mm Rear Service Poster

LED Display

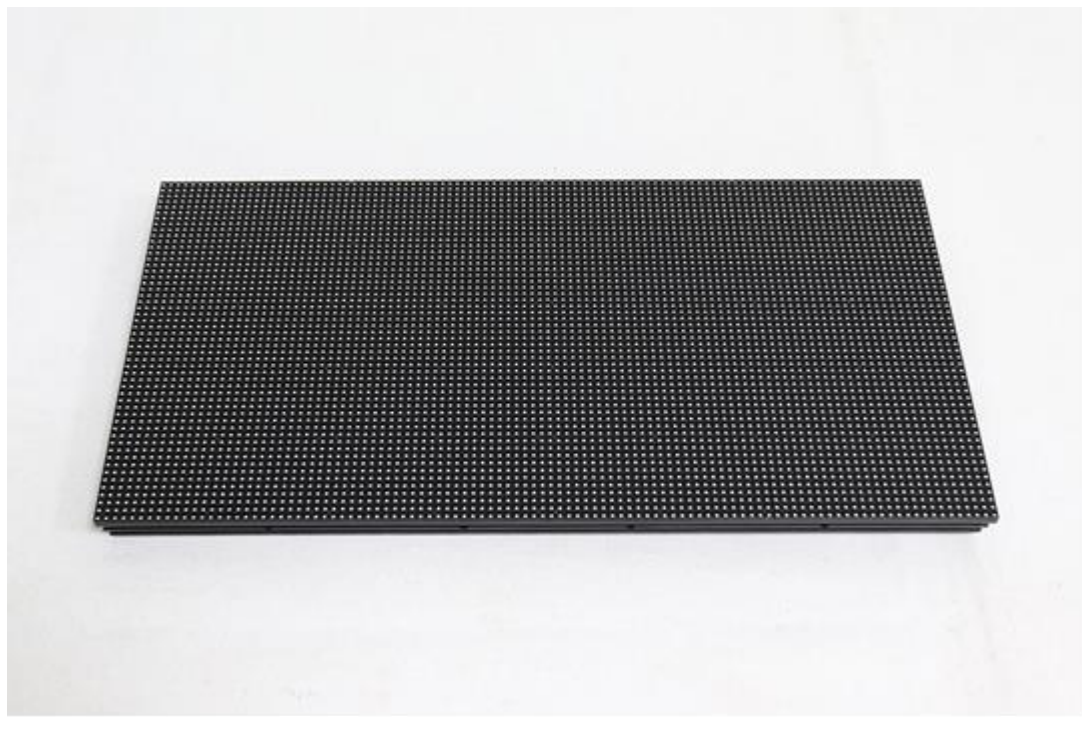
Model No.: **P3-ORP13S-SMD1415-104x52-L640xH1920**

LED Lamp Specification



Color	Package	Intensity	Viewing Angle	Wavelength	Testing Conditions
Red	SMD1415	48mcd	110°	622nm	25°C, 8mA
Green		155mcd	110°	526nm	25°C, 5mA
Blue		20mcd	110°	470nm	25°C, 3mA

Module Photo



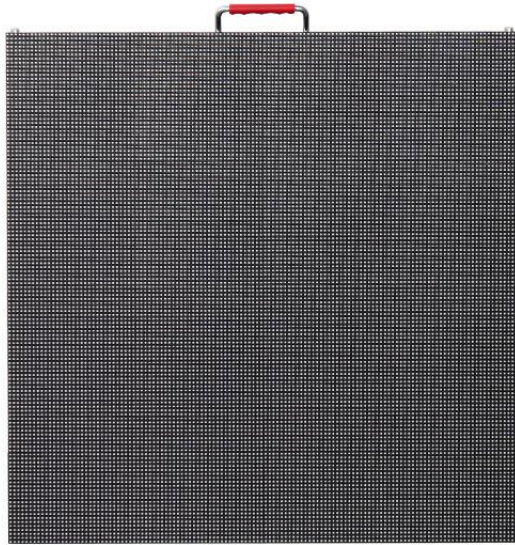


Module Parameter

Pixel Pitch	3.076mm
Pixel Configuration	SMD1415
Density	105,689 pixels/m ²
Module Resolution	104pixel(L) *52pixel(H)
Module Dimension	320mm(L) * 160mm(H) * 18mm(D)
Driving Mode	Constant current, 1/13 duty

LED Cabinet

--	--



Module Quantity in a Cabinet	2(L) *4H
Cabinet Dimension	640(L) *640(H) * 90(D)mm
Cabinet Resolution	208(L) * 208(H)
Cabinet Material	Die-cast aluminum
Cabinet Weight	≈12.5KG

Poster Screen



Cabinet Quantity of Whole the Screen	1(L) *3(H)
Display Size	640(L) *1920(H) mm
Screen Dimension (Structure included)	650(L) *640(W)*2040(H) mm
Screen Resolution	208(L) * 624(H)
Screen Weight	≈47KG
Adjustable Angle of Structure	From 80 °to 90 °

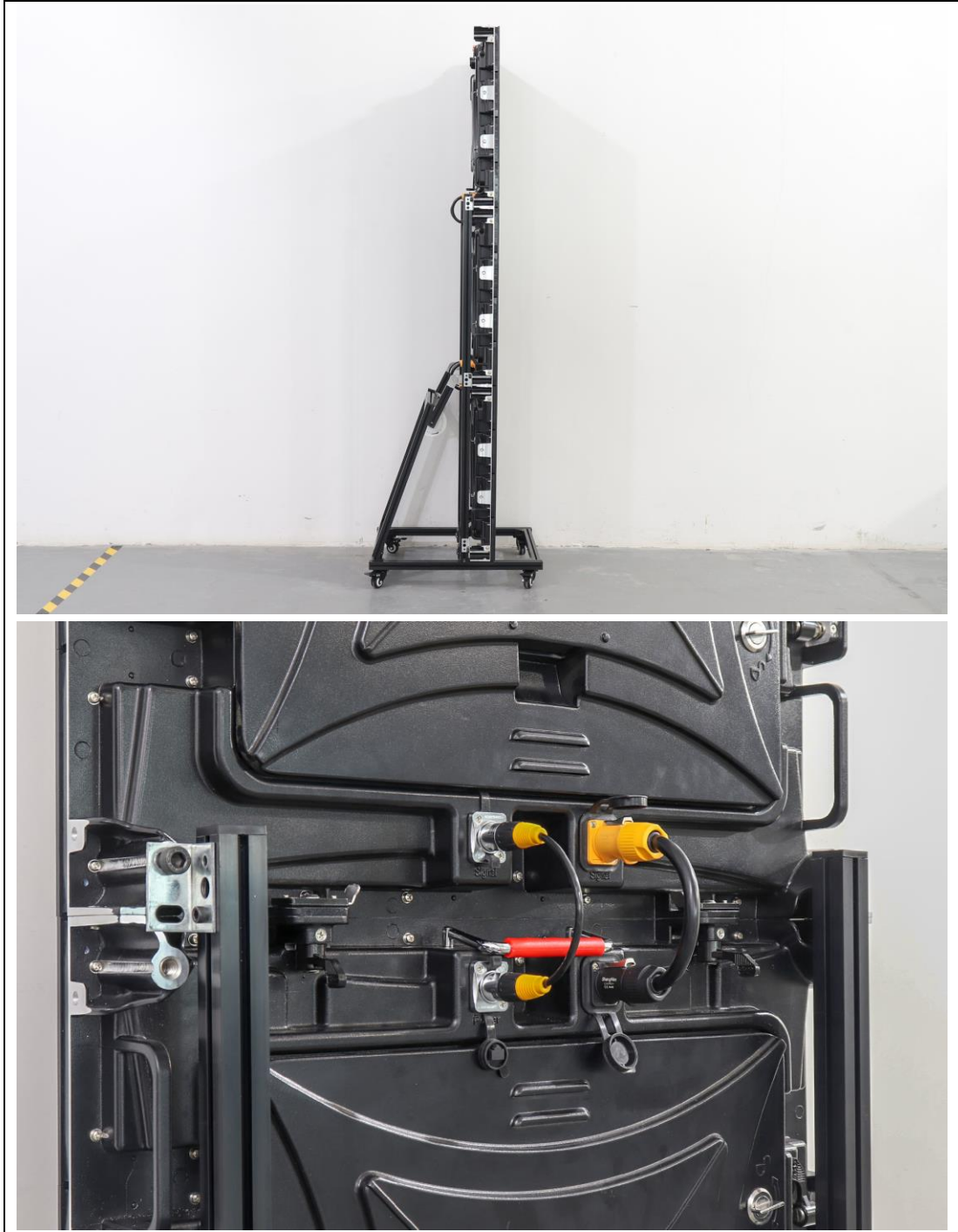
Packaging

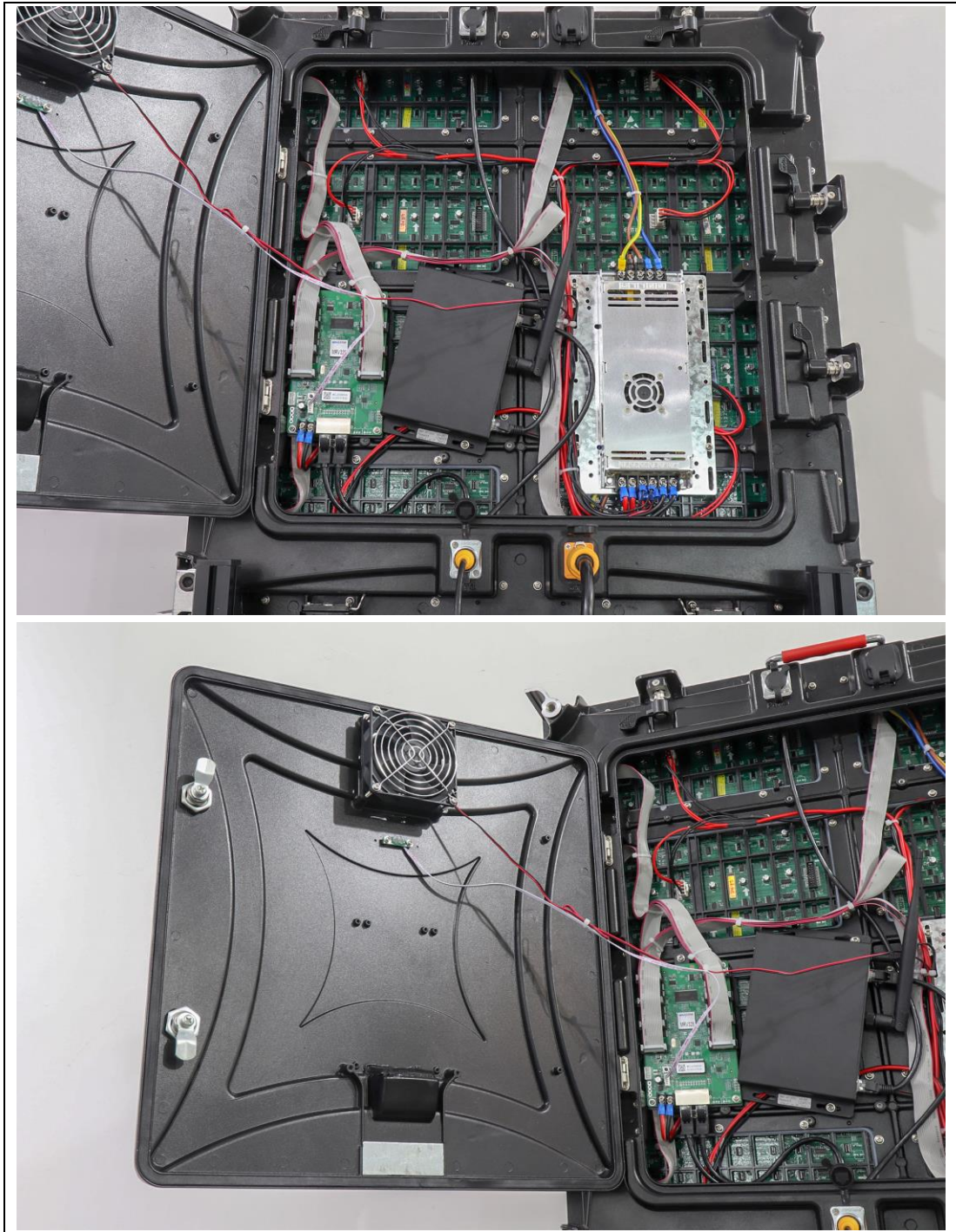


Packing Method	Cabinets, structure and all parts are packed into one case
Packing Box Style	Flight case with wheels
Packing Box Dimension	740(L)*590(W)*890(H) mm
Total Volume	≈0.39CBM
Gross Weight	≈84KG
Electricity Parameter	
Optical Ratings	
Brightness	≥5,000 cd/m ²

Viewing Angle	140 °(Horizontal); 140 °(Vertical)
Best Viewing Distance	≥3m
Gray Level	14 bits
Display Color	4.4 trillion colors
Brightness Adjustment	100 grades by software or automatically by sensor
Operation Power	AC100-240V 50-60Hz Switchable
Max. Power Consumption	786 W/m ²
Avg. Power Consumption	262 W/m ²
Control System	
Frame Frequency	≥60Hz
Refresh Frequency	≥1,920Hz
Input Signal	Composite Video, S-video, DVI, HDMI, SDI, HD-SDI
Control Distance	50m(WIFI); 100m (Ethernet cable); 20KM (Optical fiber cable)
Support VGA Mode	800*600, 1024*768, 1280*1024, 1600*1200
Color Temperature	5000—9300 adjustable
Brightness Correction	Pixel by pixel, module by module, cabinet by cabinet
Reliability	
Working Temperature	-20~+60 °C
Storage Temperature	-30~+70 °C
Working Humidity	10%~90% RH
Lifetime	100,000 hours
MTBF	5000 hours
Continuous Operating Time	≥72 hours
Protection Grade	IP65(front), IP54(rear)
Out-of-Control Pixel Rate	≤0.01%
Screen Details	













Angle adjustment

