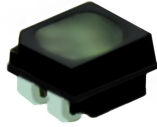


## P2 Indoor 320\*160mm Soft Flexible LED Module

### Specification

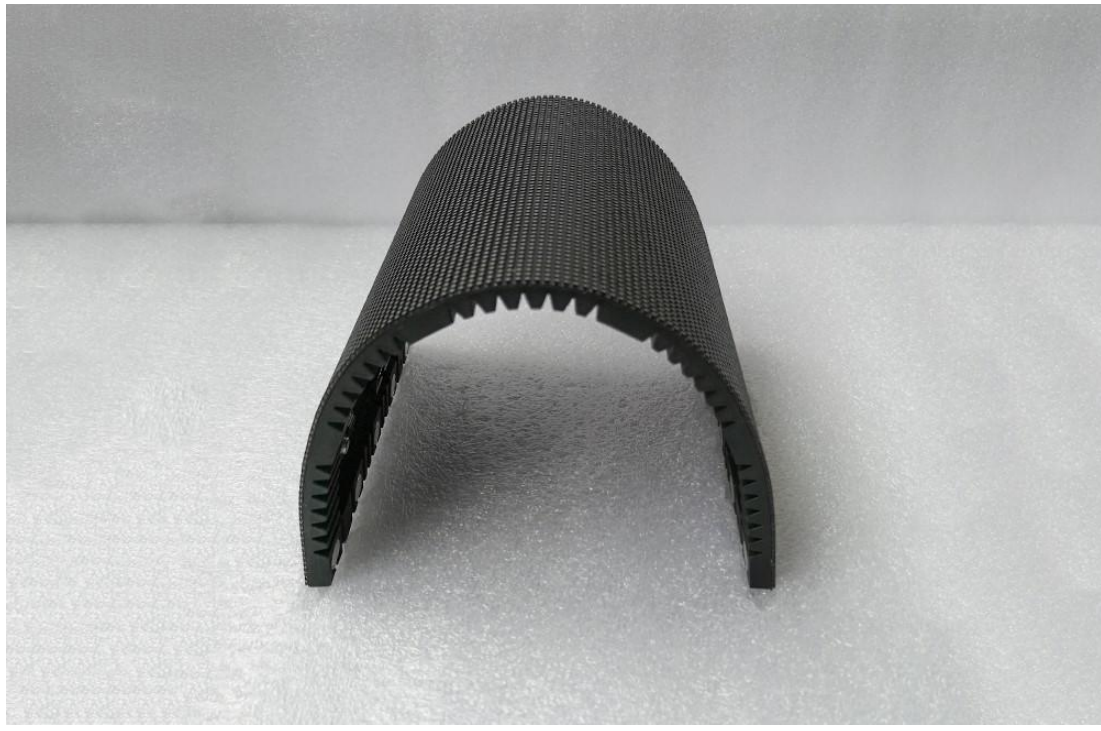
Model No.: **P2-ISF40S-SMD1515-160x80-E**

#### LED Lamp Specification



Color	Package	Intensity	Viewing Angle	Wavelength	Testing Conditions
Red	SMD1515	38-50mcd	120°	618-623nm	25°C,8mA
Green		150-195mcd	120°	519-523nm	25°C,5mA
Blue		19-25mcd	120°	467-471nm	25°C,3mA

#### Module Photo





### Module Parameter

Pixel Pitch	2mm
Pixel Configuration	SMD1515
Density	250,000 pixels/m <sup>2</sup>
Module Resolution	160pixel(L) * 80pixel(H)
Module Dimension	320mm(L) * 160mm(H) * 8.5mm(D)
Driving Mode	Constant current, 1/40 duty

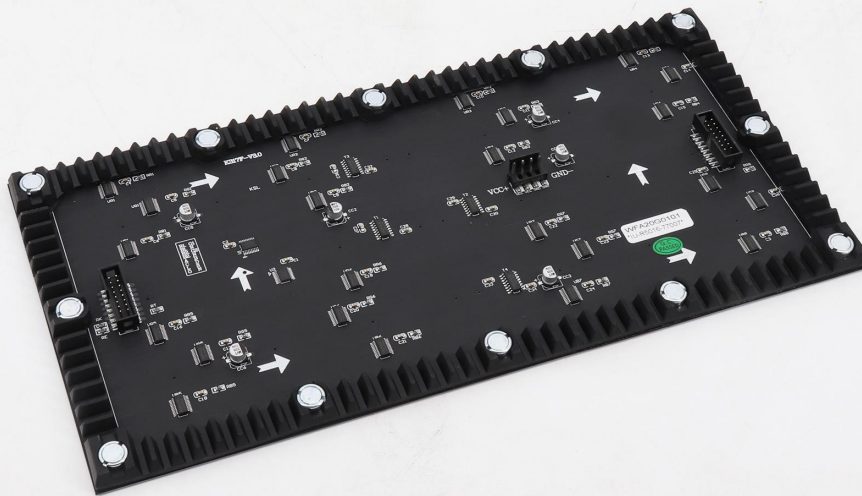
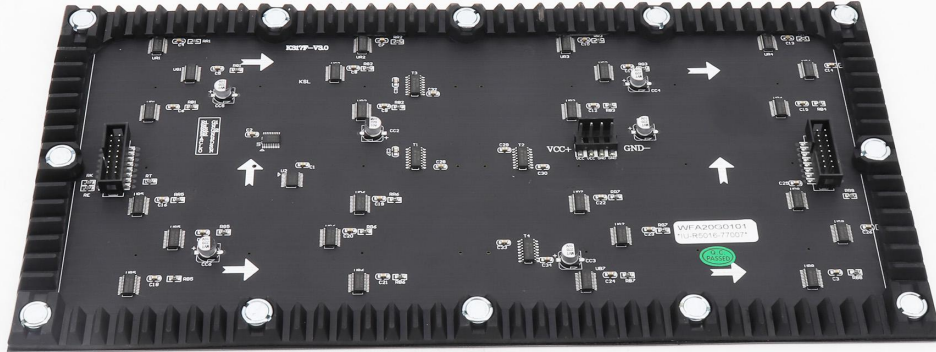
### Electricity Parameter

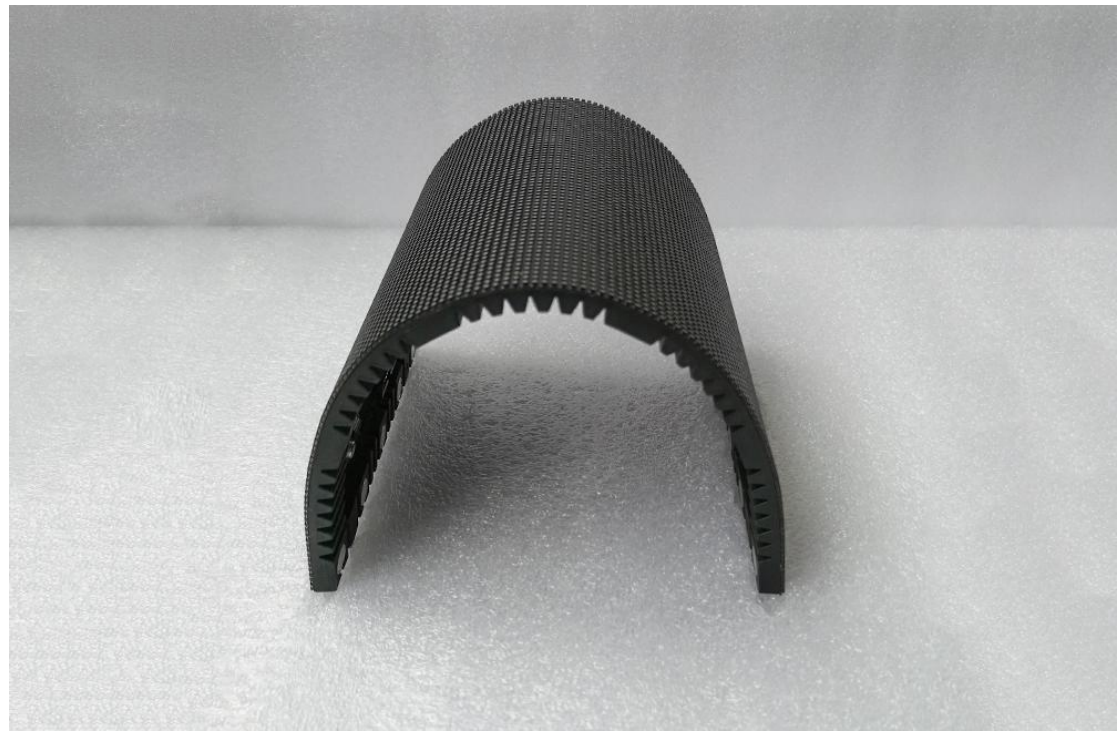
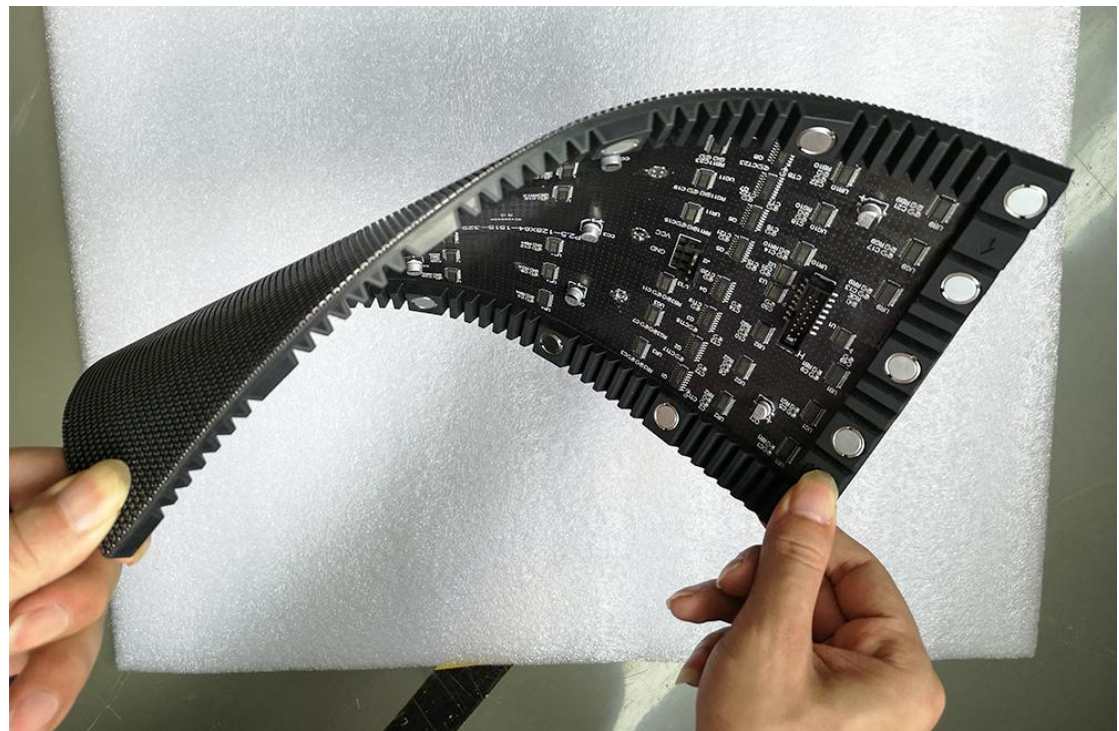
Optical Ratings	
Brightness	≥800 cd/m <sup>2</sup>
Viewing Angle	120°(Horizontal); 120°(Vertical)
Best Viewing Distance	≥2m
Gray Grade	14 bits
Display Color	4.4 trillion colors
Brightness Adjustment	100 grades by software or automatically by sensor
Max. Power Consumption	21W

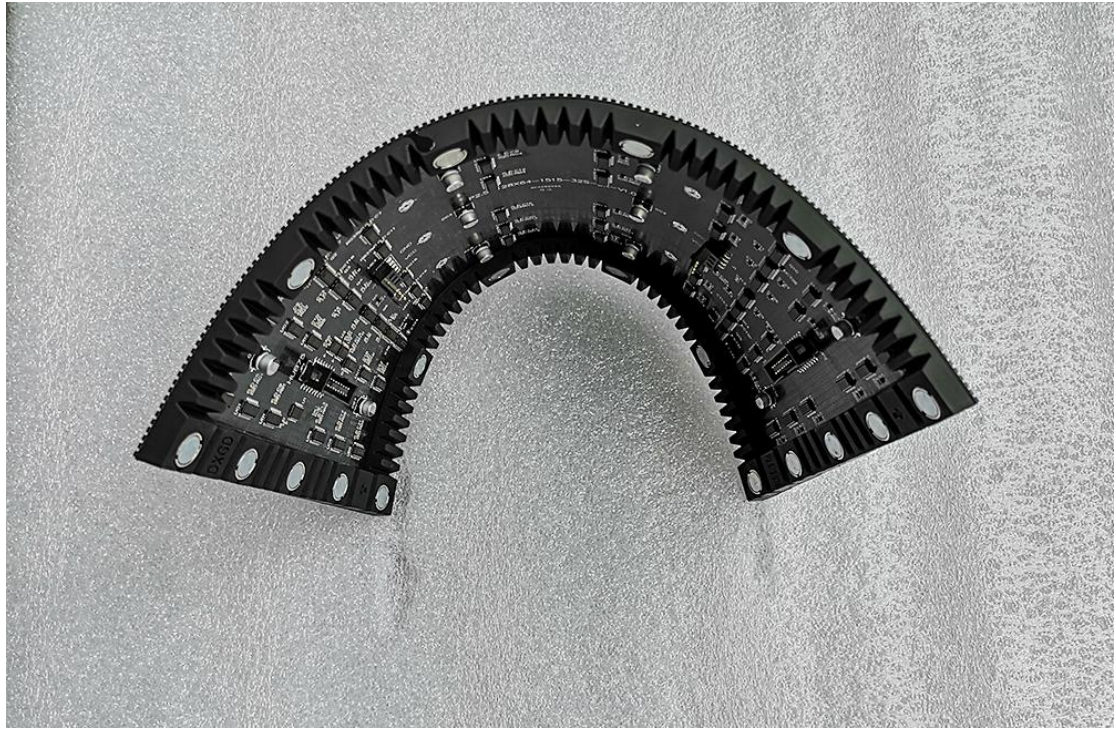
Control System	
Frame Frequency	≥60Hz
Refresh Frequency	≥3,840Hz
Input Signal	Composite Video, S-video, DVI, HDMI, SDI, HD-SDI
Control Distance	100M (Ethernet cable); 20KM (Optical fiber cable)
Support VGA Mode	800*600, 1024*768, 1280*1024, 1600*1200
Color Temperature	5000—9300 adjustable

Brightness Correction	Pixel by pixel, module by module, cabinet by cabinet
<b>Reliability</b>	
Working Temperature	-20~+60 °C
Storage Temperature	-30~+70 °C
Working Humidity	10%~90% RH
Lifetime	100,000 hours
MTBF	5000 hours
Continuous Operating Time	≥72 hours
Protection Grade	IP31
Out-of-Control Pixel Rate	≤0.01%

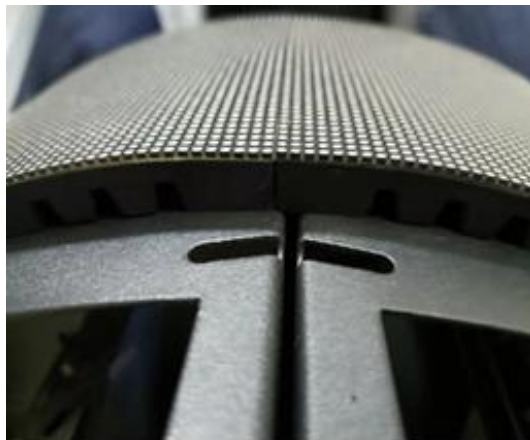
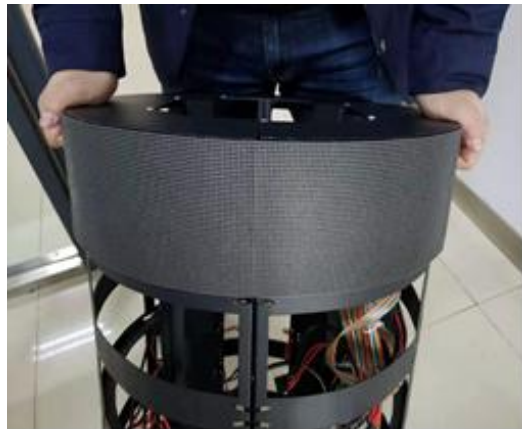
**Detail**







Assembly diagram



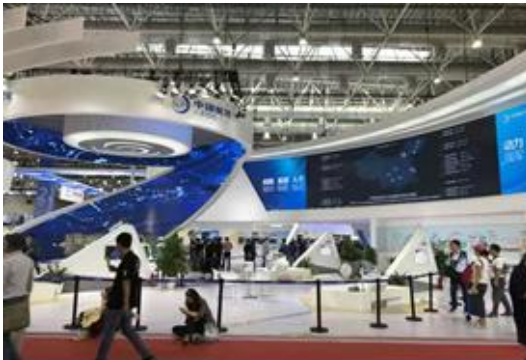
Application

Tel: +86-755-23190947

Website: <https://www.eagerled.com>

E-mail: [manager@eagerled.com](mailto:manager@eagerled.com)

Address: Building C, Zhongyu High-Tech Industrial Park, Heshuikou, Matian, Guangming, Shenzhen, China



Package





