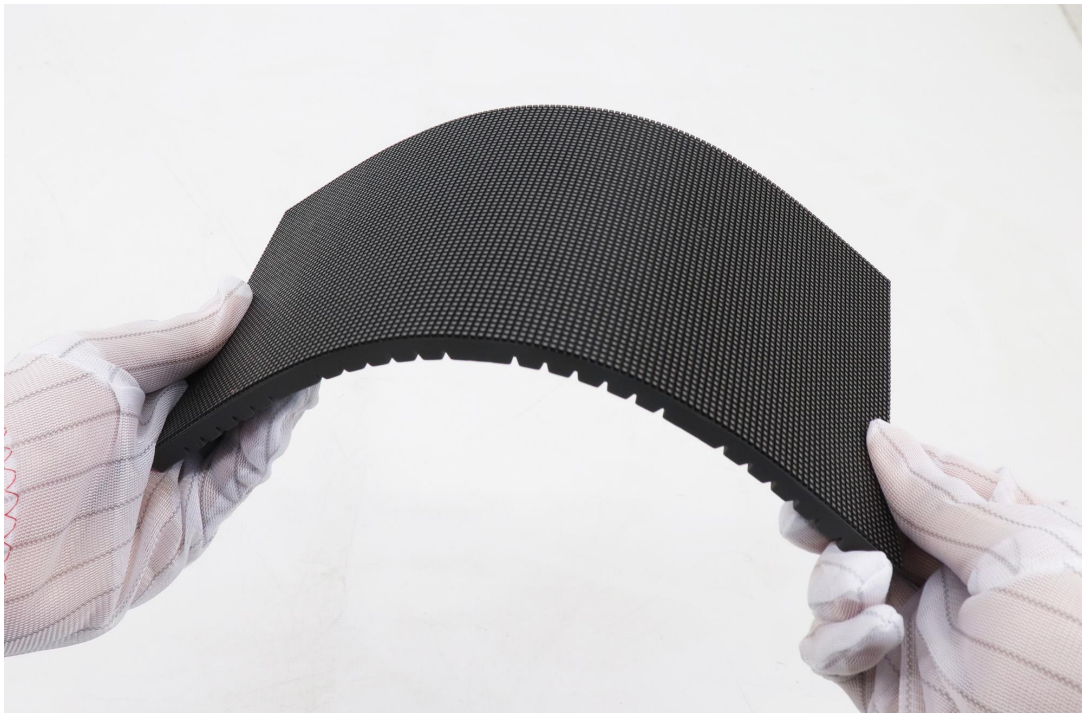
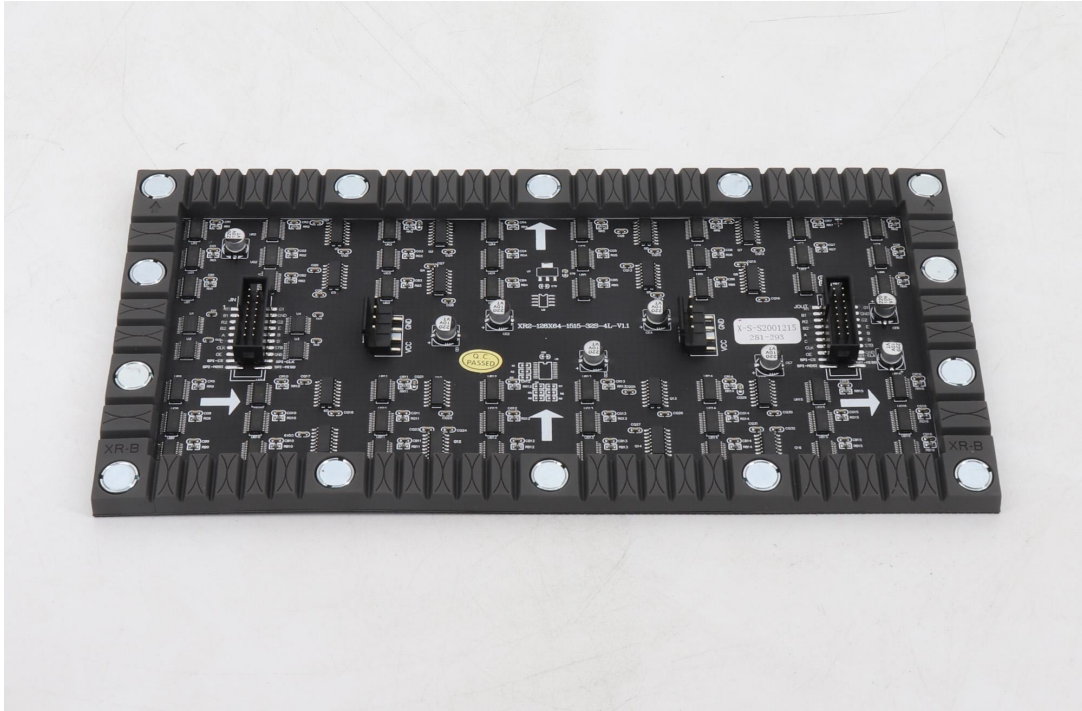


## P2 256x128mm Indoor Flexible Soft LED Display Module

### Specification

<b>Module Parameter</b>	
Pixel Pitch	2mm
Pixel Configuration	SMD1515
Density	250,000pixels/m <sup>2</sup>
Module Resolution	128pixel(L) * 64pixel(H)
Module Dimension	256mm(L) * 128mm(H) * 8.5mm(D)
Driving Mode	Constant current, 1/32 duty
Module Weight	0.3KG
<b>Module Photo</b>	
	





## Electricity Parameter

### Optical Ratings

Brightness	≥1,000 cd/m <sup>2</sup>
Viewing Angle	140°(Horizontal); 140°(Vertical)
Best Viewing Distance	≥2m
Gray Grade	16 bits
Display Color	4.4 trillion colors
Contrast Ratio	5000:1
Brightness Adjustment	100 grades by software or automatically by sensor
Max. Power Consumption	20 W

### Control System

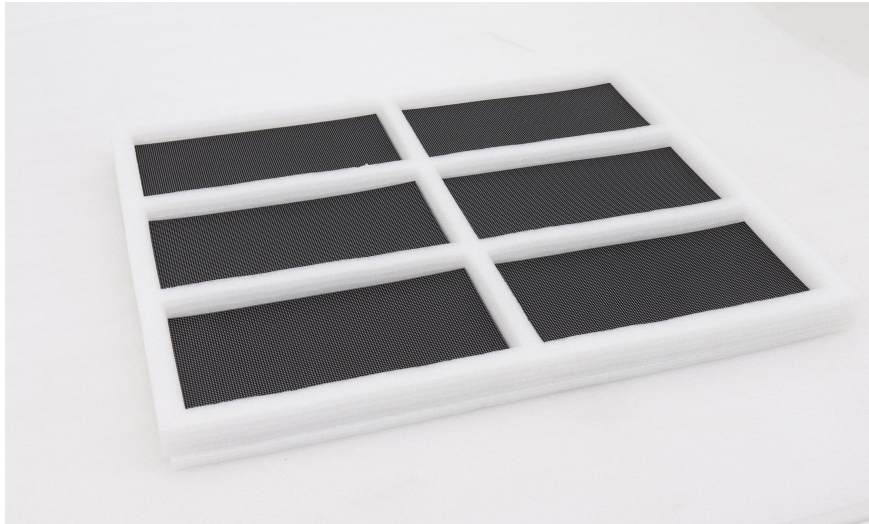
Frame Frequency	≥60Hz
Refresh Frequency	≥3,840Hz
Input Signal	Composite Video, S-video, DVI, HDMI, SDI, HD-SDI
Control Distance	100M (Ethernet cable); 20KM (Optical fiber cable)
Support VGA Mode	800*600, 1024*768, 1280*1024, 1600*1200
Color Temperature	5000—9300 adjustable
Brightness Correction	Pixel by pixel, module by module, cabinet by cabinet

### Reliability

Working Temperature	-20~+60 °C
Storage Temperature	-30~+70 °C
Working Humidity	10%~90% RH
Lifetime	100,000 hours

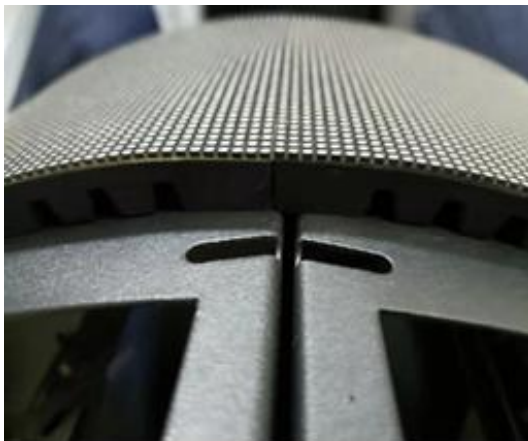
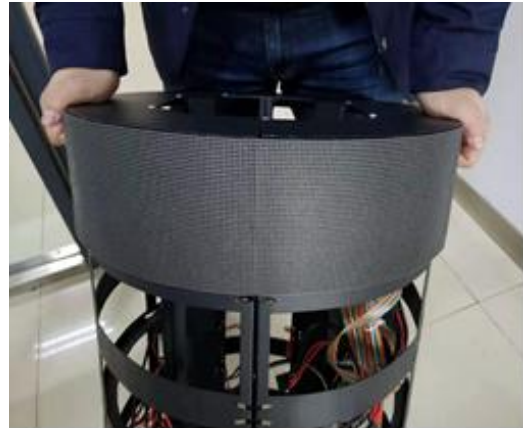
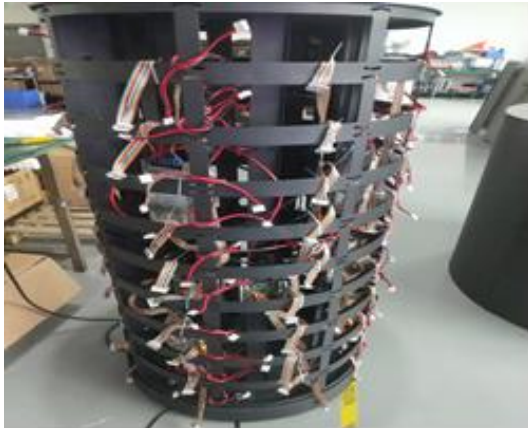
MTBF	5000 hours
Continuous Operating Time	≥72 hours
Protection Grade	IP31
Out-of-Control Pixel Rate	≤0.01%

**Package**

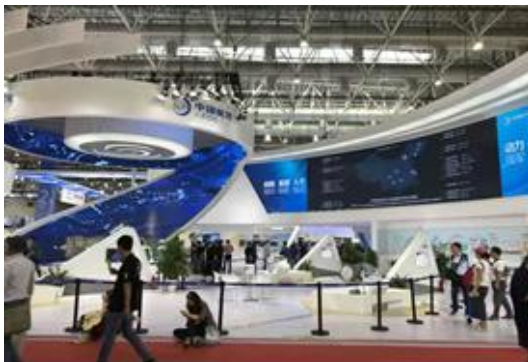




**Assembly diagram**



**Application**



Tel: +86-755-23190947

Website: <https://www.eagerled.com>

E-mail: [manager@eagerled.com](mailto:manager@eagerled.com)

Address: Building C, Zhongyu High-Tech Industrial Park, Heshuikou, Matian, Guangming, Shenzhen, China

**Model No.: P2-ISF32S-SMD1515-128x64**